

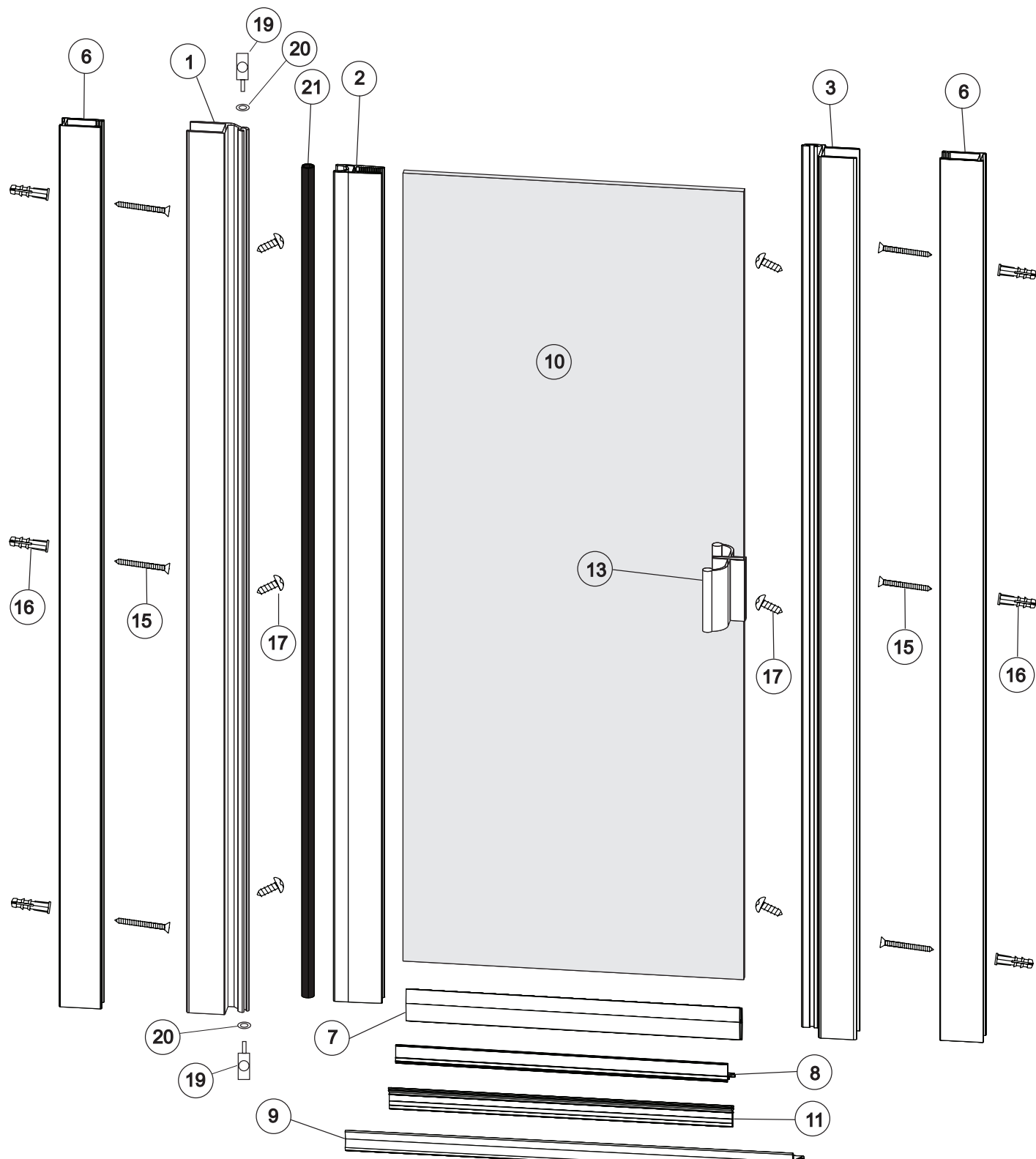
**Installation Instructions for the  
Vision Collection Swing Door Enclosure.**

**Model: VSD**

**Drawing Number: 6170      Rev. Date: 12-08-08**



**Figure #1 - VSD Shower Door Assembly**



# Installation Instructions for the Vision Collection Swing Door Enclosure.

Model: VSD

Drawing Number: 6170 Rev. Date: 12-08-08



Figure #2 - VSD Shower Door Assembly - Top View

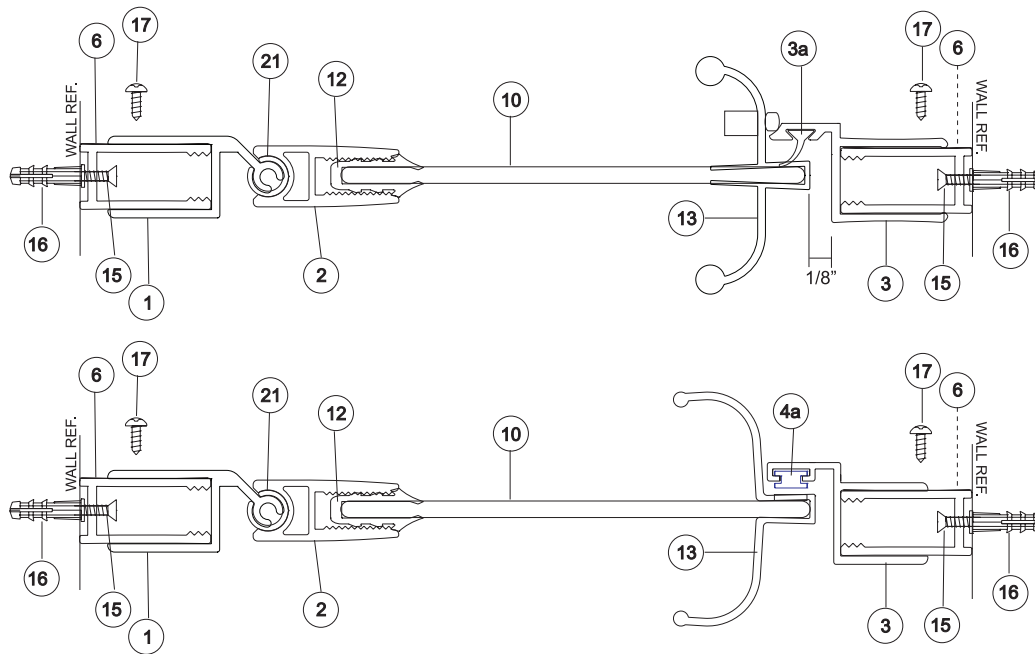


Figure #3 - VSD Magnet Strip

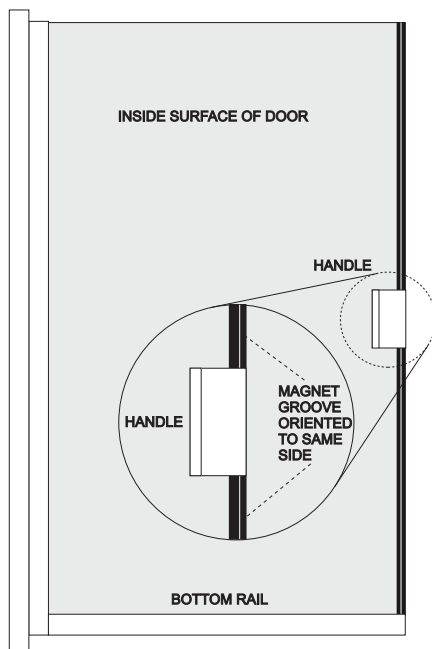
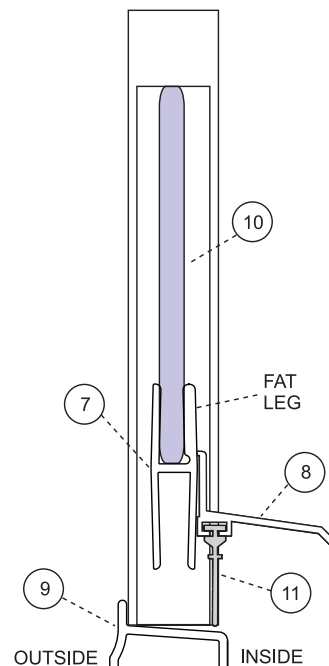


Figure #4 - VSD Drip Deflector



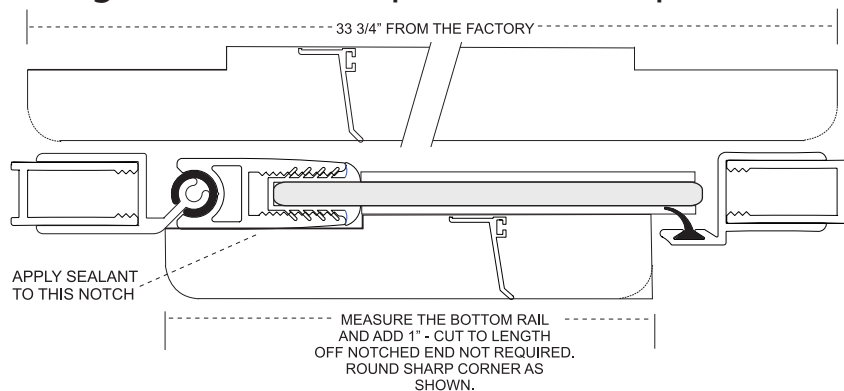
# Installation Instructions for the Vision Collection Swing Door Enclosure.

**Model: VSD**

**Drawing Number: 6170      Rev. Date: 12-08-08**



**Figure #5 - VSD Drip Deflector Preparation**



## 6170 - VSD Parts List

ITEM #	PART #	DESCRIPTION	QTY.	ITEM #	PART #	DESCRIPTION	QTY.	ITEM #	PART #	DESCRIPTION	QTY.
1	1165	HINGE JAMB	1	7	1169	BOTTOM RAIL	1	15	2101	#8 X 1-1/2 FHPSMS	6
2	1166	HINGE RAIL	1	8	1097	DRIP DEFLECTOR	1	16	2217	3/16\"	6
3	1167	LATCH JAMB (for vinyl)	1	9	1019	LOW CURB DAM STRIP	1	17	2102	#6 X 3/8 PHPSMS	8
3a	4015	LATCH JAMB VINYL	1	10	7102	GLASS PANEL	1	18	6170	INSTRUCTION SHEET	1
4	1193	LATCH JAMB (for magnet)	1	11	4018	VW-2 VINYL SWEEP	1	19	2001	HINGE PIN	2
4a	4100	LATCH JAMB MAGNET	1	12	4009	VS-8 BOOT VINYL	1	20	2002	FLAT WASHER	2
5	4102	ADHESIVE MAGNET	1	13	3018 KIT	HANDLE ASSY.	1	21	4034	HINGE SLEEVE	1
6	1068	WALL CHANNEL	2	14	4023	HANDLE VINYL	1				

Please note that all parts listed above will not be in your product.

## 6170 - VSD Assembly Instructions



### SAFETY WARNING:

These installation instructions must be followed to ensure proper operation of the door and to reduce the risk of serious injury. Any deviation from these instructions can result in a serious safety hazard.

All exposed ends of aluminum that are rough, sharp or jagged due to the metal being cut, drilled or damaged should be de-burred, smoothed or rounded by the installer before installation. Failure to do so could result in serious injury to the user of the enclosure.

Any part of the swinging glass panels hitting any unprotected bathroom obstruction or metal or glass component of the shower door itself, may indicate improper installation and could lead to serious injury. Installers must correct the deficiencies before allowing the door to be used.



### NOTE

Wall channels are pre-cut to 1 1/16" longer than the Hinge and Latch Jamb. If this is a door only installation, cut the Wall Channels to the same length as the Hinge and Latch Jamb.

### STEP 1

Evaluate your threshold. If an inward slope is not present on the threshold, use the options Low Curb Dam Strip, (ITEM #9) that is included with this product. See (fig. 1)

### STEP 2

If you are using the Dam Strip, measure wall to wall at the base and cut the dam strip 1/16" less than the dimension. The door will be installed on top of the dam strip. If not using the dam strip, start the installation on top of the threshold. Cut 2- Wall Channels, (ITEM #6) down to the same length as the Latch Jamb.

### STEP 3

Start at the Hinge side wall, place one wall channel (ITEM #6), in place. See (fig. 2) Plumb and mark the hole locations onto the wall. Remove the channel and drill the three holes with a 3/16" drill bit. (use a carbide tipped masonry bit if going into tile or other masonry type products. Insert 3- wall anchors, (ITEM #16). Protect the Wall Anchors and holes from water with sealant. Reposition the Wall Channel and secure it to the wall with 3- #8 X 1-1/2 FHPSMS, (ITEM #15). Set the second Wall Channel in place, plumb it and mark only the bottom hole at this time. Remove the channel and drill just the bottom hole. Insert a wall anchor, add sealant and secure the bottom of the

# Installation Instructions for the Vision Collection Swing Door Enclosure.

**Model: VSD**

**Drawing Number: 6170      Rev. Date: 12-08-08**



## STEP 3 (continued)

channel with 1- #8 X 1-1/2 FHPHSMS. Tighten the screw so the channel will stay in place, but can still be moved.

## STEP 4

Slide the Latch Jamb, (ITEM #3 or 4), in place over the Wall Channel with only one screw in it, do not secure. Slide the Hinge Jamb and door assembly over the fixed Wall Channel. Adjust the door assembly and Latch Jamb so that they are adjusted approximately the same off of each wall. Use a level placed across the top edge of the door to ensure it is level then starting with the top factory hole in the Hinge Jamb, drill through the factory holes into the Wall Channel with a #32 wire gauge drill bit. Secure the door with 3- #6 X 3/8 PHPHSMS, (ITEM # 17).

## STEP 5

Position the Latch Jamb vertically by closing the door and rotating the Latch Jamb and Wall Channel to the door. Find a point on the wall where the door seals full length on the Latch Jamb. Mark the position of the Wall Channel on the wall then **remove the Latch Jamb**. Rotate the Wall Channel to the mark on the wall and mark the remaining two holes onto the wall. Drill the remaining two holes with the 3/16" drill bit, insert 2- Wall Anchors, (ITEM #16), add sealant, then secure the Jamb Filler with 2- #8 X 1-1/2 FHPHSMS (ITEM #15).

**\*\* DETERMINE WHAT HANDLE TYPE YOU HAVE AND USE THE FOLLOWING DIRECTIONS ACCORDINGLY \*\***

### STEP 6a- BULLET CATCH HANDLE:

Set the Latch Jamb back over the Wall Channel and adjust so that when the door is closed, the edge of the door panel is 1/8" from the perpendicular flat surface of the Latch Jamb. See (fig. 2). Drill through all three factory pilot holes with a #32 wire gauge drill bit and secure with 3- #6 X 3/8 PHPHSMS (ITEM # 17).

### STEP 6b - MAGNETIC STRIP HANDLE

Set the Latch Jamb in place over the Wall Channel, **do not secure** at this time.

### STEP 7a - BULLET CATCH HANDLE

Apply the Handle Vinyl, (ITEM #14), to the latch side of the door panel at the vertical centerline of the glass or a more comfortable height. Tap the Handle assembly in place, over the vinyl. The plastic bullet catch is to the inside of the shower. Trim the excess vinyl from around the handle. Adjust the bullet catch on the handle from the inside with a Phillips screwdriver.

### STEP 7b - MAGNETIC STRIP HANDLE

Apply the Handle Vinyl, (ITEM #14), to the latch side of the door panel at the vertical centerline of the glass or a more comfortable height. Tap the Handle assembly in place, over the vinyl. Measure from the top of the handle to the top edge of the glass. Mark this dimension onto the Magnetic Strip with the adhesive backing, (ITEM #5) and neatly cut it to size. Peel the backing off the magnet and from the **inside** of the door, butt it to the top of the handle, as close to the glass edge as possible and stick it on the glass, working out any air bubbles. Measure from the bottom of the handle to the top of the bottom rail. Mark this dimension onto the balance of the Magnetic Strip with the adhesive backing and neatly cut it to size. **VERY IMPORTANT:** The magnet face has an Identification "groove" along one edge. Be sure that both magnetic strips have the groove oriented to the same edge. See (fig. 3) Peel the backing off the magnet and from the **inside** of the door, butt it to the bottom of the handle, as close to the glass edge as possible and stick it on the glass, working out any air bubbles. The adhesive will attain maximum strength in 72 hours. The door may be used during this curing time. Close the door against the latch jamb and adjust it until it fully covers the magnets on the door. If the magnets repel each other, slide the magnet out of the Latch Jamb and turn it end for end, then slide it back in. Secure the Latch Jamb by drilling through all three factory pilot holes in the with a #32 wire gauge drill bit and secure with 3- #6 X 3/8 PHPHSMS (ITEM #17).

## STEP 8

Refer to (fig. 5) and measure the length of the Bottom Rail. Add 1". The Drip Deflector (ITEM#8), is notched at both ends. Measure from the end with the notch you need and straight cut to length. File a radius on the sharp corner as shown. Install the bottom weep vinyl into the bottom of the Drip Deflector. Trim flush on each end. Peel the paper off the tape on the Drip Deflector. Stand inside the shower with the door closed, and attach the Drip Deflector to the bottom of the door so that the bottom sweep is within a 1/16" of touching the Dam Strip. If not using the Dam Strip, the bottom sweep should just touch the threshold. Apply sealant the Drip Deflector notch as shown in (fig. 5).

## STEP 9

Run a bead of sealant the full length on the outside of the shower door where the aluminum meets the wall and across the bottom if you are using the Dam Strip.