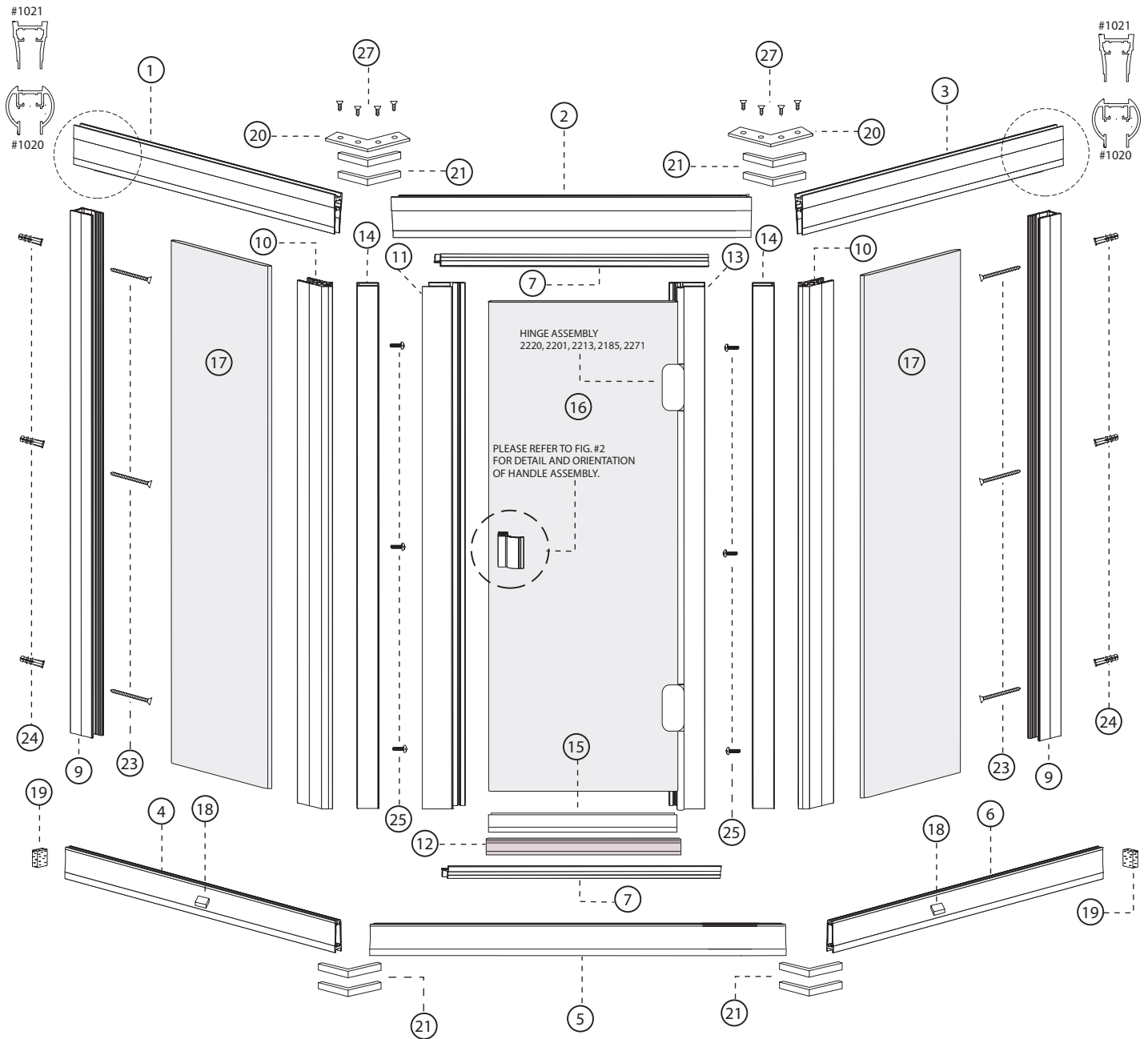


**Installation Instructions for the
Accent/Euro Collection NEO Angle Swing Door.
Model: ASD/USD-NEO Angle
Drawing Number: 6145 Rev. Date: 11-27-06**



FIG. #1 - ASD/USD-NEO Angle Shower Door Assembly



**Installation Instructions for the
Accent/Euro Collection NEO Angle Swing Door.
Model: ASD/USD-NEO Angle
Drawing Number: 6145 Rev. Date: 11-27-06**



FIG # 2 - Shower Door Side View

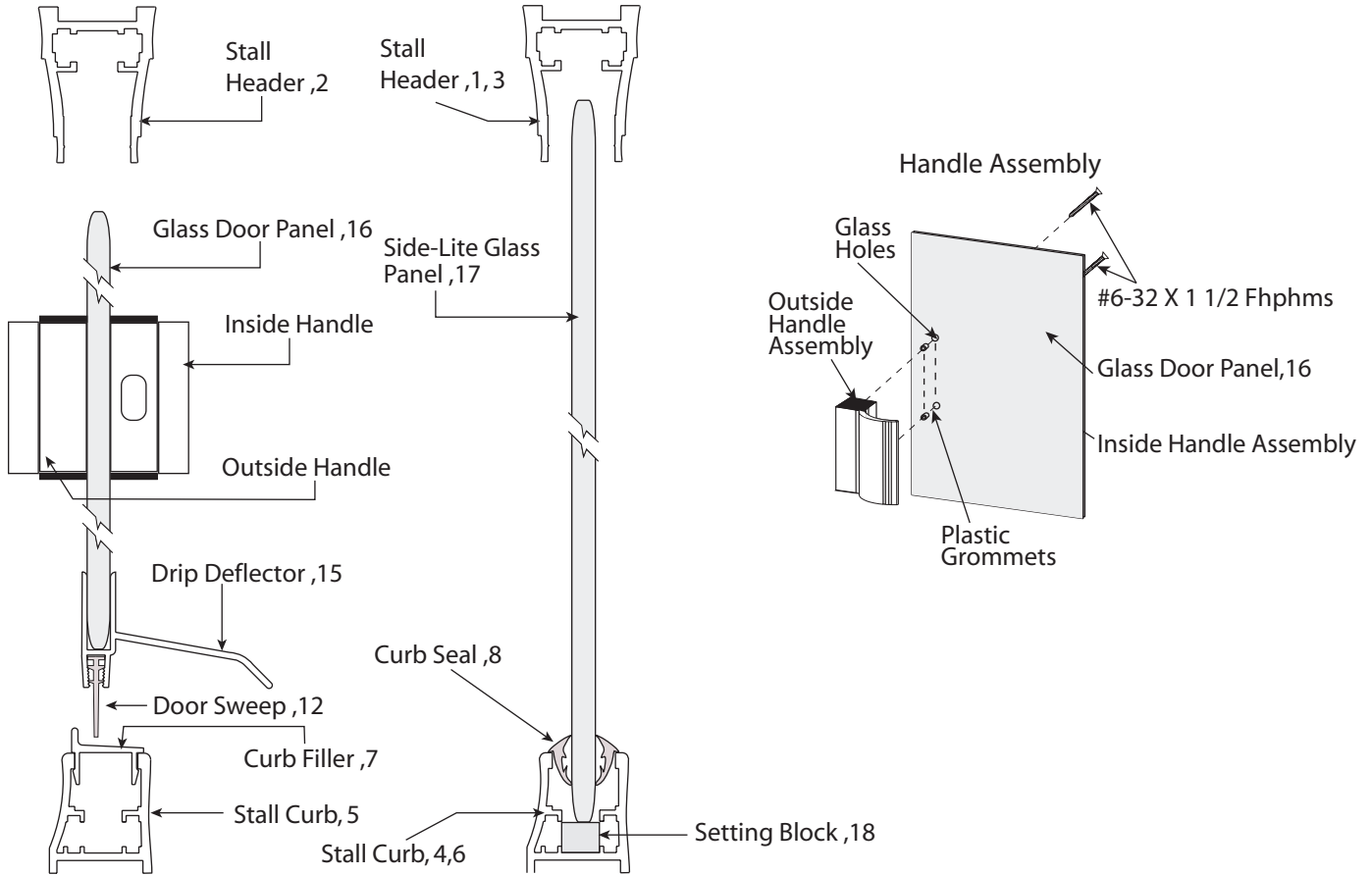
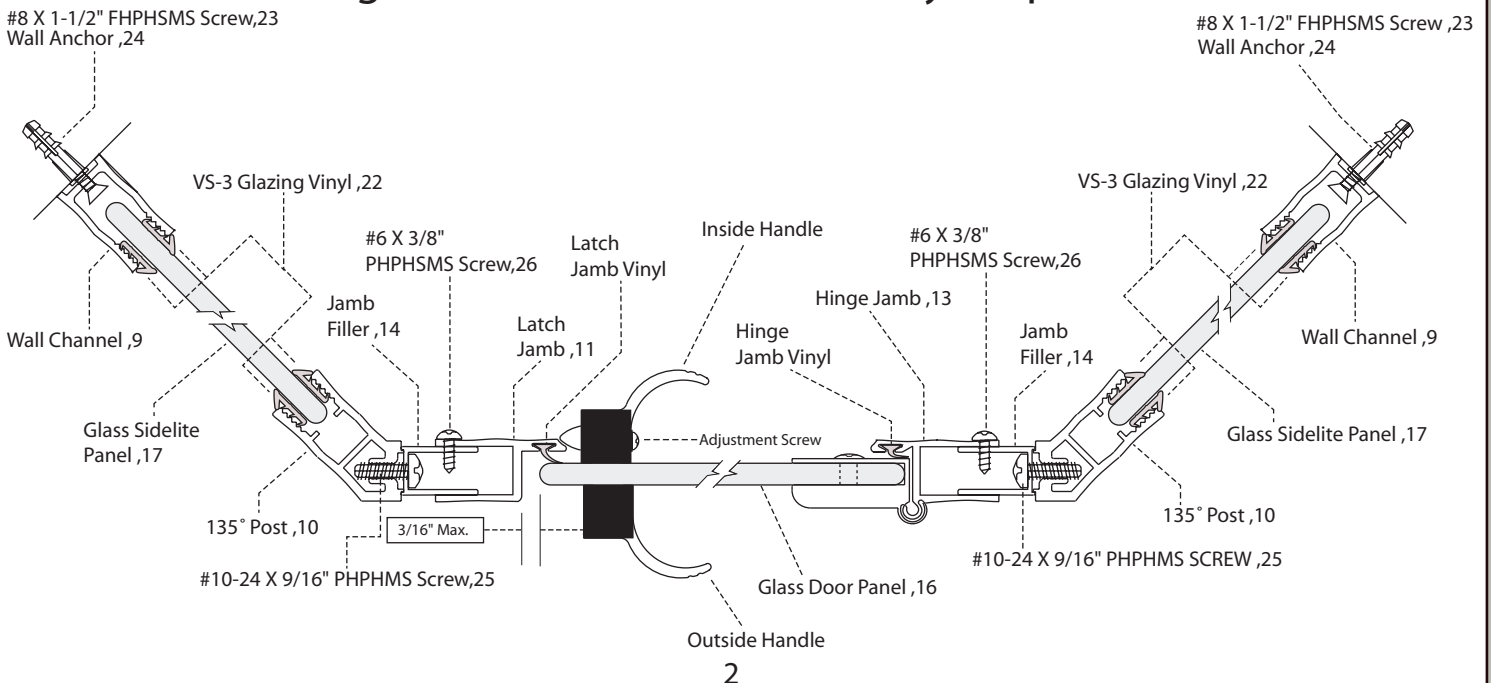


Fig. #3 - Shower Door Assembly - Top View



**Installation Instructions for the
Accent/Euro Collection NEO Angle Swing Door.
Model: ASD/USD-NEO Angle
Drawing Number: 6145 Rev. Date: 11-27-06**



Fig. #4 - Stall Curb Filler

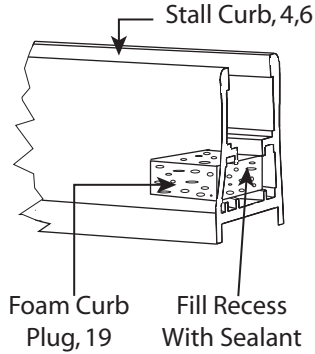


Fig. #5 - Notching

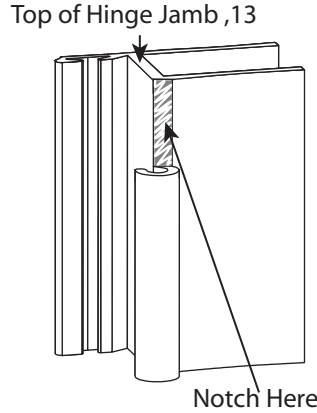


Fig. #6 Jamb Filler

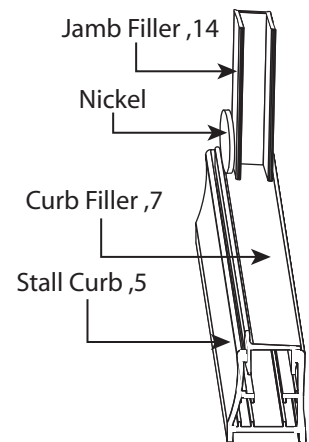
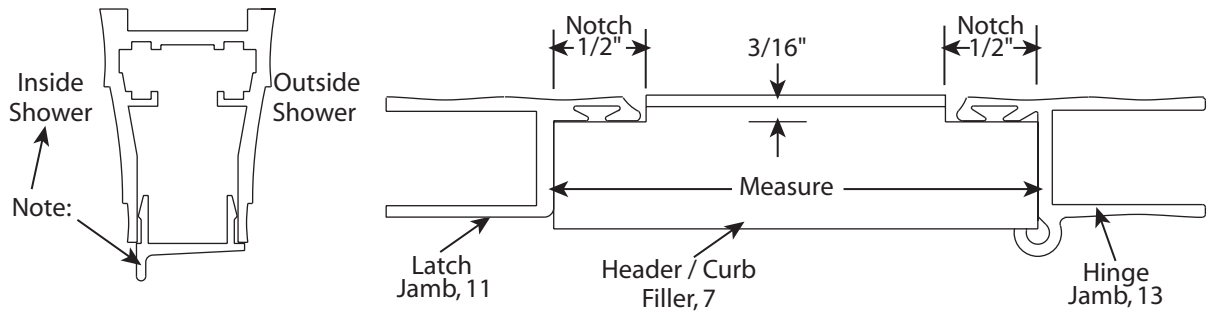


Fig. #7 Header Filler #1025 Measurements



6145 - ASD/USD NEO Angle Parts List

ITEM #	PART #	DESCRIPTION	QTY
1	1021 / 1020	STALL HEADER LEFT SEC.	1
2	1021 / 1020	STALL HEADER CENTER SEC.	1
3	1021 / 1020	STALL HEADER RIGHT SEC.	1
4	1022	STALL CURB LEFT SEC.	1
5	1022	STALL CURB CENTER SEC.	1
6	1022	STALL CURB RIGHT SEC.	1
7	1025	STALL HEADER / CURB FILLER	2
8	4011	VS-1 CURB SEAL	1
9	1026	WALL CHANNEL	2
10	1029	135° POST	2
11	1001	LATCH JAMB	1
	4015	VS-5 LATCH JAMB VINYL	1
12	4018	VW-2 BOTTOM SWEEP	1
13	1002	HINGE JAMB	1
	2220	HINGE	2
	2201	HINGE PIN	2
	2213	HINGE BUSHING	4
	4015	VS-5 HINGE JAMB VINYL	1
	2185	#8-32 X 7/16 TRUSS HEAD	2
	2271	3/16 PLASTIC GROMMET	2

ITEM #	PART #	DESCRIPTION	QTY
14	1003	JAMB FILLER	2
15	1009	DRIP DEFLECTOR	1
FIG. #2	3004	HANDLE ASSEMBLY	1
16	7004	GLASS DOOR PANEL	1
17	7006	GLASS SIDE LITE PANEL	2
18	2203	SETTING BLOCK	2
19	2204	FOAM CURB PLUG	2
20	2018	135° STALL PLATE	2
21	2017	135° STALL HEADER / CURB CLIP	8
22	4013	VS-3 GLAZING VINYL	8
23	2101	#8 X 1-1/2 FHPHMS	6
24	2217	3/16 WALL ANCHOR	6
25	2111	#10-24 X 9/16 PPHMS	6
26	2102	#6 X 3/8 PPHMS	6
27	2103	#6 X 3/8 FHPHMS	8
28	2107	#8 X 1/2 PPH TEK	6

**Installation Instructions for the
Accent/Euro Collection NEO Angle Swing Door.
Model: ASD/USD-NEO Angle
Drawing Number: 6145 Rev. Date: 11-27-06**



6145 - ASD/USD NEO Angle Assembly Instructions

SAFETY WARNING:

These installation instructions must be followed to ensure proper operation of the door and to reduce the risk of serious injury. Any deviation from these instructions can result in a serious safety hazard.

All exposed ends of aluminum that are rough, sharp or jagged due to the metal being cut, drilled or damaged should be de-burred, smoothed or rounded by the installer before installation. Failure to do so could result in serious injury to the user of the enclosure.

Any part of the swinging glass panels hitting any unprotected bathroom obstruction or metal or glass component of the shower door itself, may indicate improper installation and could lead to serious injury. Installers must correct the deficiencies before allowing the door to be used.



SPECIAL NOTE:

Drilling holes and anchoring horizontal sills and curbs to thresholds and tub decks is discouraged and is left to your discretion. Using masking tape or double-sided tapes to hold these components down during installation is recommended to minimize the potential for water leaking underneath flooring and onto ceilings below. These instructions do not recommend drilling holes on horizontal surfaces for this reason. Deviating from recommended installation instructions voids the Agalite Lifetime Warranty.

STEP 1 - STALL CURB:

NOTE: Your curb sections may have already been cut to size from the factory. If not, on the shower base, mark the centerline of the unit. Measure each centerline distance and add 3/16" to each sidelite panel measurement and 3/8" to the door measurement. Transfer to the appropriate curb sections, ITEM #4, 5, 6. NOTE: All dimensions on the Curb and Header are measured from the tip, (farthest point), of the 22 1/2° miter. Be sure to select the curb that is mitered in the direction for the side that you are measuring. Also, be sure that weep holes are oriented to the inside of the shower. At this time, cut only the curb sections to their installed lengths. Straight cut the butt ends opposite the miter to achieve the finished length. Insert one Curb Plug, ITEM #19, into the straight cut end of each Stall Curb and recess approximately 1/8"; see FIGURE #4. Fill each recess with sealant. Take 4- 135° Curb Clips, ITEM #21, and assemble the three curb sections, refer to FIGURE #1. Set the curb sections in place over the centerline of shower and temporarily secure in place with masking tape. Insert one Setting Block, ITEM #18, into the curb where each sidelite panel will set, FIGURE #1. With a screwdriver or other appropriate tool, press each of the Curb Plugs with the sealant into each wall sealing the curb ends. Seal the mitered corner so that any water that enters the curbs cannot leak out.

STEP 2 - WALL CHANNEL:

Set a Wall Channel, ITEM #9, into the Sidelite Panel end of the Stall Curb and against the wall with open edge of channel facing away from wall. Refer to FIGURE #3. Plumb the Wall Channel, then using the wall channel's pre-drilled holes as a template; mark the three installation holes on the wall. Remove Wall Channel and drill holes into the wall with a 3/16" drill bit. If drilling into tile or other types of masonry material, Agalite recommends the use of a carbide tipped drill bit. Insert one Wall Anchor, ITEM #24, into each hole. Reposition the Wall Channel, and secure with 3 - #8 X 1-1/2" FHPH SMS screws, ITEM #23. Repeat procedure for second Wall Channel.

STEP 3 - SIDELITE PANEL:

Insert the appropriate Sidelite Glass Panel, ITEM #17, into the curb and slide into the Wall Channel. NOTE: If obscure, frosted or pebbled glass is used, insure that the rough side of the panel faces to the outside. Set a 135° Post into the curb and over the edge of the glass panel. Be sure to line up the outside corner of the post with the curb miter. With a level, plumb the 135° Post and temporarily hold the post in place by glazing the top of the post with a few inches of the VS-3 Glazing Vinyl, ITEM #22. NOTE: (Do not cut the vinyl at this time). Repeat procedure for second Sidelite panel. Measure between the 135° Posts at the curb and cut the Curb Filler, ITEM #7, to this dimension. With the vertical water dam of the Curb Filler to the outside of the shower, firmly snap into place between the posts. Refer to FIGURE #4, for proper orientation. The door assembly will be installed on top of the Curb Filler.

STEP 4 - STALL HEADER:

NOTE: The center section header only, may be cut to size from the factory. If not, start with the center section Stall Header that sets over the door assembly, ITEM #2. Cut the #1021 header 1/8" longer, than the corresponding center curb section that was already installed in Step 1. If you are using the #1020 Stall Header, cut the header to 3/16" longer than the center section curb. To cut the center section header you must replicate the factory miter of 22-1/2° off of 90°. The long point of the miters will be the finished length. Cut only the

**Installation Instructions for the
Accent/Euro Collection NEO Angle Swing Door.
Model: ASD/USD-NEO Angle
Drawing Number: 6145 Rev. Date: 11-27-06**



6145 - ASD/USD NEO Angle Assembly Instructions Cont.

center section at this time. Using a level, plumb the 135° post in both directions. With the post plumb, measure from the outside corner of the post to each wall. Add a 1/8" to this measurement if you are using the #1021 Stall Header, or add 3/16" if you are using the #1020 Stall Header. Mark this dimension on a Header section, ITEM #1 or ITEM #3. NOTE: All dimensions on the header and curb are measured from the tip, (the farthest point) of the 22 1/2° miter. Be sure to select the header that is mitered in the right direction for the side that you are measuring. At this time, cut the header to length by cutting the butt end opposite the miter to achieve the finished length. Repeat this procedure for the second header section. Assemble the left, center, and right header sections with 4 - 135° Header Clips, ITEM #21, and 2- 135° Header Plates, ITEM #20. Do this by drilling through the holes in the plate into the headers with a #32 wire gauge drill bit. Secure with 8 - #6 X 3/8" FPHSMS screws, ITEM #27. Refer to FIGURE #1. Set headers in place over the vertical posts. Secure the header assembly to the vertical posts from the inside of the shower by drilling through the headers into each vertical post with a #32 wire gauge drill bit. Start with the Wall Channels at the Back wall, then the 135° Posts. Be very careful not to drill or screw into the glass panels. The panels can be moved side to side while drilling. Secure the headers with 4 - #6 X 3/8" PHPHSM screws, ITEM #26. The bottom of both 135° Posts are secured by drilling through the Stall Curb into the Post with the same #32 wire gauge drill bit. Secure with 2- #6 X 3/8" PHPHSMS screws, ITEM #26. After attachment is complete, center the sidelite panels between the posts and glaze the verticals with 8 strips of VS-3 vinyl, ITEM #22, and 4 strips of VS-4 Curb Seal, ITEM #8. NOTE: The vinyl seals are designed to be tight to provide maximum water protection, and minimize shrinkage due to temperature extremes. If it becomes difficult to push the vinyl in place, lubricate it with glass cleaner. This will allow easy installation then will evaporate leaving the vinyl tight and smooth. SPECIAL NOTE: Do not use any type of grease, oils, or silicone sprays as these will harm the vinyl and will stay in place long after the installation is complete compromising safety as well as water protection. Finish this step by installing both Jamb Fillers, ITEM #14, to the 135° Posts as follows: Position the closed edge of the Jamb Filler to the 135° Post with the bottom of the filler resting on top of the Curb Filler. Secure the filler to the post with 3 - #10-24 X 9/16" PHPHMS screws, ITEM #25. Refer to FIGURE #3. CAUTION: Do not over tighten the screws.

STEP 5 - DRIP DEFLECTOR:

Take the Door Sweep, ITEM #12, and slide it into the bottom of the Drip Deflector, ITEM #15, as shown in FIGURE #2. A mild solution of soapy water will help if the sweep is difficult to pull through. The vinyl sweep has a memory when it is stretched, so be sure to work the sweep back and forth after it is drawn into the deflector. Trim the vinyl leaving 1/4" of the Door Sweep protruding from each end. Set the door assembly on its top on a cushion or pad, so that the bottom of the door is up. Set the Drip Deflector over the bottom edge of the door with the deflector portion to the inside of the shower. With a mallet or block of wood, gently tap the deflector over the edge of the door panel as far as it will go. In most cases, the glass thickness is enough to hold the Drip Deflector in place for the life of the door. In some circumstances the glass may be slightly thinner, depending on the type of glass being used, or the manufacturer of the glass its self. In these cases, the corners of the Deflector may be "pinched" to hold the Deflector in place, or simply inject a small amount of caulking into the channel where the glass will fit to maximize the holding power of the Deflector. NOTE: Only a small amount of caulking is necessary, too much caulking will be squeezed out during adjustment. It will be readjusted later. Make sure that the Drip Deflector does not protrude past the edge of the glass on the handle side.

STEP 6 - DOOR ASSEMBLY:

Measure the distance from the top horizontal surface of the Curb Filler, the surface that the Jamb Fillers are setting on, to the bottom of the Header assembly. Transfer this dimension to the hinge jamb, measuring from the bottom and make your mark at the top of the jamb. Insert a hacksaw into the notch that is at the top of the hinge jamb and continue the notch down to the mark you made, then notch off. This procedure can be performed while still attached to the glass panel. See FIGURE #5. DOOR ADJUSTMENT: The net opening for this model is the dimension between the 135° Posts (the same dimension that the Curb Filler was cut to). Adjustment should be made by adjusting the Hinge Jamb first, then the Latch Jamb, approximately the same off both Jamb Fillers. Slide the door assembly over the appropriate Jamb Filler and move it to the determined dimension off the 135° Post. Use a small level placed along the top horizontal edge of the glass to level the door. From the inside of the shower, screw through the top pilot hole in the Hinge Jamb into the Jamb Filler with 1 - #8 X 1/2" PHPHTEK screw, ITEM #28. The door will hold in place with only the top screw installed. Next, re-level the door and screw through the middle and bottom holes with 2 - #8 X 1/2" PHPHTEK screws, ITEM #28.

STEP 7 - LATCH JAMB:

Slide the Latch Jamb, ITEM# 11, in place over the appropriate Jamb Filler and up into the header. Do not secure the Latch Jamb at this time. Move the door to the closed position, pulling the Latch Jamb off enough so that it stops the door. With the door closed, the reveal

**Installation Instructions for the
Accent/Euro Collection NEO Angle Swing Door.
Model: ASD/USD-NEO Angle
Drawing Number: 6145 Rev. Date: 11-27-06**



6145 - ASD/USD NEO Angle Assembly Instructions Cont.

between the vertical glass edge of the door and the Latch Jamb is a maximum of 3/16" for the handle catch to work properly. A 1/8" is ideal. Please see FIGURE #3, for adjustment detail. From the inside of the shower, screw through the factory holes in the Latch Jamb, into the Jamb Filler using with 3 - #8 X 1/2 PHPHTEK screws, ITEM #28.

STEP 8 - HANDLE ASSEMBLY:

Take the Inside Handle assembly, (the one with the bullet catch and adjustment screw), and insert 2 - #6-32 X 1-1/2" FHPHMS screws into the two screw holes in the Handle. Slide one Plastic Grommet over each threaded portion of the screws. With the door in the open position, from the inside of the door, insert this Handle assembly through the corresponding holes in the glass panel. Holding the assembly in place, set the Outside Handle assembly in place over the holes and tighten the screws. **WARNING:** This shower door should not be installed without grommets. The grommets prevent the glass from touching the metal screw. If the metal touched the glass, the glass can break and create a serious safety hazard. Adjust the catch mechanism as necessary by turning the Phillips head screw on the inside Handle assembly. Finish the installation by adjusting the Drip Deflector as follows: Close the door and from either the inside or the outside, use a block of wood to tap the deflector down so that the Door sweep is approximately 1/16" above the Curb Filler's horizontal surface. The deflector does not need to tilt to function.

STEP 9 - HEADER FILLER:

Measure between the Hinge Jamb and Latch Jamb at the header, then cut the Header Filler, ITEM #7, to this dimension. Notch ends both ends to fit. Refer to FIGURE #7.

STEP 10 - CAULKING:

First, seal each end of the Drip Deflector with caulk, then run a bead of caulking the full length on the inside of the shower where each Jamb Filler meets the wall and across the bottom where it meets the shower base. Finish by sealing each end of the Curb Filler.

6145 - ASD/USD NEO Angle Buttress Instructions

BUTTRESS INSTRUCTIONS:

STEP 1 - Follow Step #1 in main instructions, EXCEPT, there will only be 2 - Curb sections, add 3/16" to each of these, do not add 3/8" for door measurement.

STEP 2 - Follow Step 2 in main instructions, EXCEPT, there will only be 1- full size Wall Channel.

STEP 3 - FIGURE A = Attach Jamb Filler, ITEM #14, to 135° Post, Item #10, with 3 - #10-24 x 9/16" PHPHMS screws, ITEM #25. Set attached jambs in place and plumb with a level. Set Panel Sill in place lined up off of attached post. Hold in place with strips of masking tape. Remove attached post. Seal end of panel sill at wall with caulking. Set Wall Channel in place on top of panel sill, plumb and secure to wall. Insert Setting Blocks and install sidelite panel. Reinstall attached post and secure to buttress face. Follow Step #2 & #3 in main instructions for full size Wall Channel and side lite panel.

STEP 4 - Follow Steps 4 through 10 in main instructions.

