

Installation Instructions

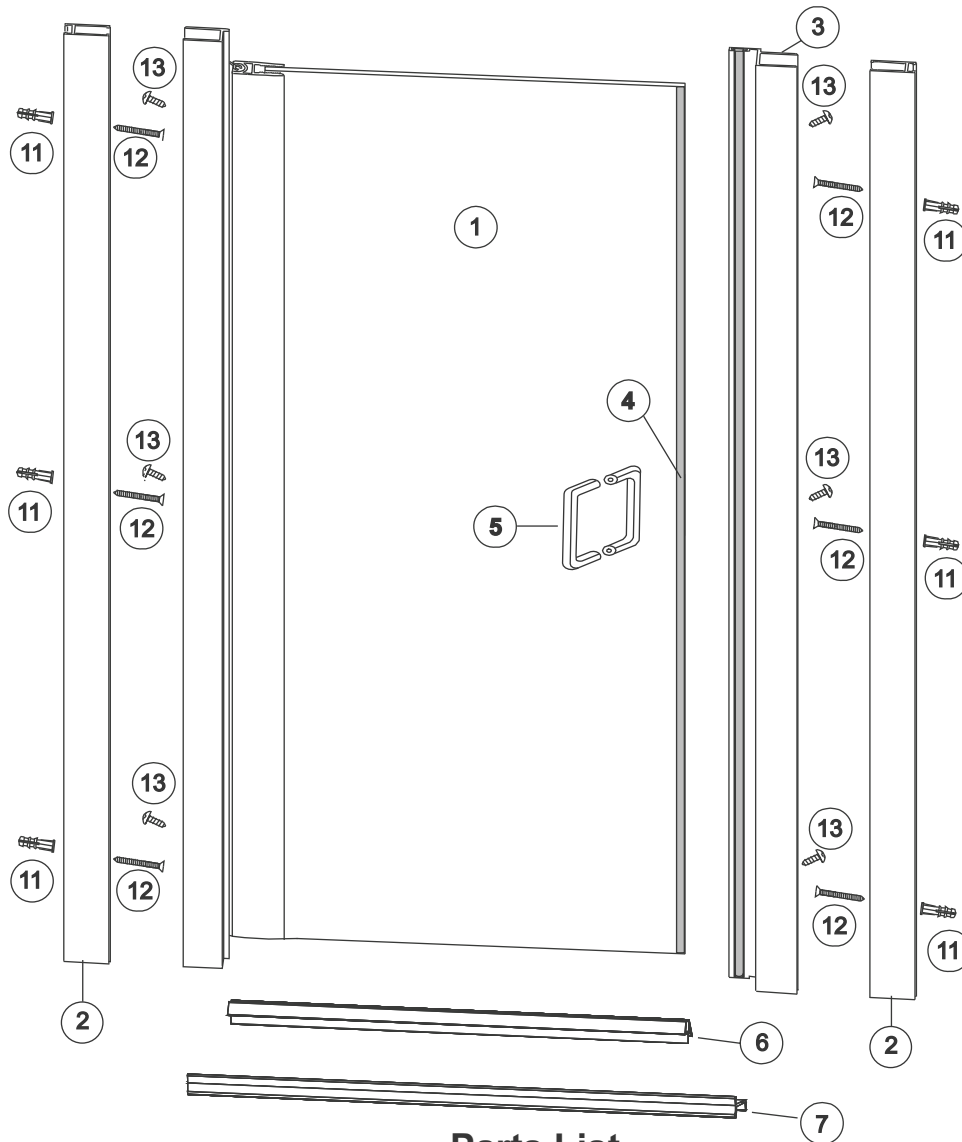
Models: SSD - Silhouette Swing Door

1/4" Semi-Frameless Door



P/N MM.5030 (9-18)

This installation sheet is a component added during boxing of unit or KD.



Parts List

Latch Pack	CAT#:	PART LIST	QTY.:
	1	DOOR ASSEMBLY	1
	2	WALL CHANNEL	2
	3	STRIKE JAMB w/ VN.4100 Magnet	1
	4	VN.4102 MAGNET w/ VHB TAPE	1
	5	HA.2701 D-PULL HANDLE ASSEMBLY	1
	6	BP.4062 DRIP RAIL	1
	7	DAM STRIP	1

	PART LIST:	QTY.:
	11 BP.3027 3/16" WALL ANCHORS	6
	12 BP.3027 #8 X 1-1/2" FHPHMS	6
	13 BP.3027 #8 X 1/2" PH TEK SCREWS	6

General Required Tools

- * Pencil or water soluble felt pen
- * Hacksaw with 24 tooth blade
- * Metal file (smooth sharp edges)
- * Tape measure
- * Drill, electric or battery

- * #2 Phillips Screw driver
- * 7/64" and 3/16" drill bits
- * Caulking gun
- * Clear 100% Silicone (recommended)

- * 4 ft. Level
- * Rubber mallet
- * Razor knife
- * Blue painters tape

SAFETY WARNINGS:

CAUTION - READ THOROUGHLY BEFORE INSTALLATION



HEAVY



CAUTION



SHARP



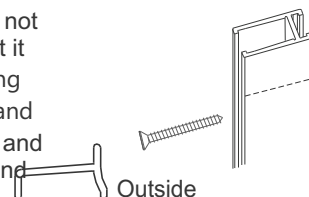
GLASS FRAGILE

Follow instructions: Instructions must be read and followed carefully to reduce the risk of serious injury during and after installation. Any deviation from these instructions can create safety hazards.
Tempered Glass: Agalite enclosures glass panels are safety tempered to conform to general building codes. The intent of tempering is to reduce the risk of injury. Be careful handling tempered glass. Pay special attention to protect all edges of the glass from contact with hard surfaces.

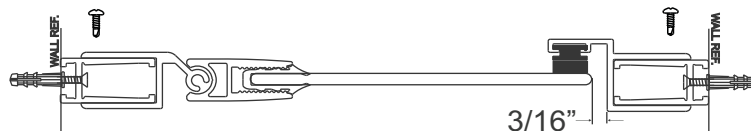
General Notes:

- **Exposed ends of aluminum** and other hard components can be rough, sharp or jagged due to the processes of cutting, drilling, notching, etc. Sharp ends must be deburred, smoothed or rounded by the installer before installation. Failure to do so could result in serious injury to installer and user of the enclosure.
- **Sliding and swinging glass doors** hitting any unprotected bathroom obstruction or metal or glass component of the shower door itself, may indicate improper installation and could lead to glass breakage or serious injury. The installer must correct the deficiencies before allowing the door to be used.
- **Towel Bars, handles and other accessories** are in no way considered to be grab bars or other bracing or fall prevention mechanisms. The intent of these accessories is to facilitate proper operations and esthetics of the unit.

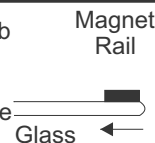
1 Mark the centerline of the opening lightly with a pencil. Evaluate your threshold. If an inward slope is not present on your threshold use the dam strip. If using the dam strip, measure from wall to wall and cut it to 1/16" less than the opening. Install the dam strip with the vertical lip to the outside. Before mounting the wall jambs for a door only installation, cut the wall channels down to the same size as the hinge and strike. Position the wall jambs down onto the dam strip or threshold, over the centerline, then plumb and mark hole locations. Drill 3/16" holes and install the anchors. Place wall channels over the anchors and



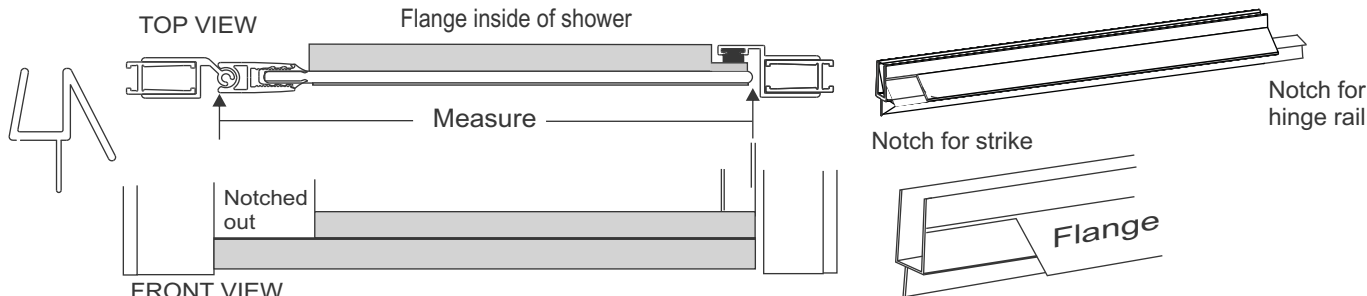
2 Determine which side you would prefer the door to hinge from, usually the side with the shower head. Place the strike jamb over the wall channel opposite the side where the door will hinge. Position the hinge jamb over the remaining wall channel and secure the at the top with a clamp or #8x1/2" tek screw. Plumb with a level, and adjust the hinge and strike jambs to leave a 3/16" reveal between the edge of the door and the base of the strike jamb from top to bottom. Once the door is plumb and level, secure the middle and bottom of the hinge jamb with a #8x1/2" tek screw. Attach the handle through the holes in the glass using the provided shims and bushings.



3 Before installing the full length magnet, clean the door glass. Please note the polarity of the magnet in the latch jamb and magnet with the adhesive. Apply the magnet to the glass by peeling off the backing and applying it down the edge of the glass as shown. Adjust the strike to work correctly with the magnet in the rail and to be plumb. If the magnets repel each other, reverse the magnet strip in the latch jamb. Secure the top, middle and bottom of the strike with #8x1/2" tek screws.



4 Measure the bottom of the door from the edge of the glass to the hinge rail. Cut the drip rail to that size so that the notch is on the side where the hinge rail is and the flange is on the inside of the shower. Notch the flange of the drip rail so that it does not interfere with the strike on the inside of the door. The flange may be scored with a razor knife to make it easier to snap off. The upper portion of the drip rail should be notched so that the flexible sweep extends under the hinge rail. When you are satisfied with the fit of the drip rail install it onto the bottom of the door pushing up far enough so that the sweep drags across the dam strip. When the rest of the installation is complete, remove the drip rail and place a few drops of silicone into the channel. Replace the drip rail onto the bottom of the door glass. cut the adhesive magnet strip of at the top of the drip rail and peel off excess.



5 We recommend filing any sharp corners that may cause injuries, then clean and run a continuous bead of silicone sealant outside of the threshold and up the wall jambs.

For installation and technical support please reference the shipping document, the box that the product was shipped in or call the retail location that you purchased the product from.