

FIG. #1 - ASD-290 & USD-290 PAW Shower Door Assembly

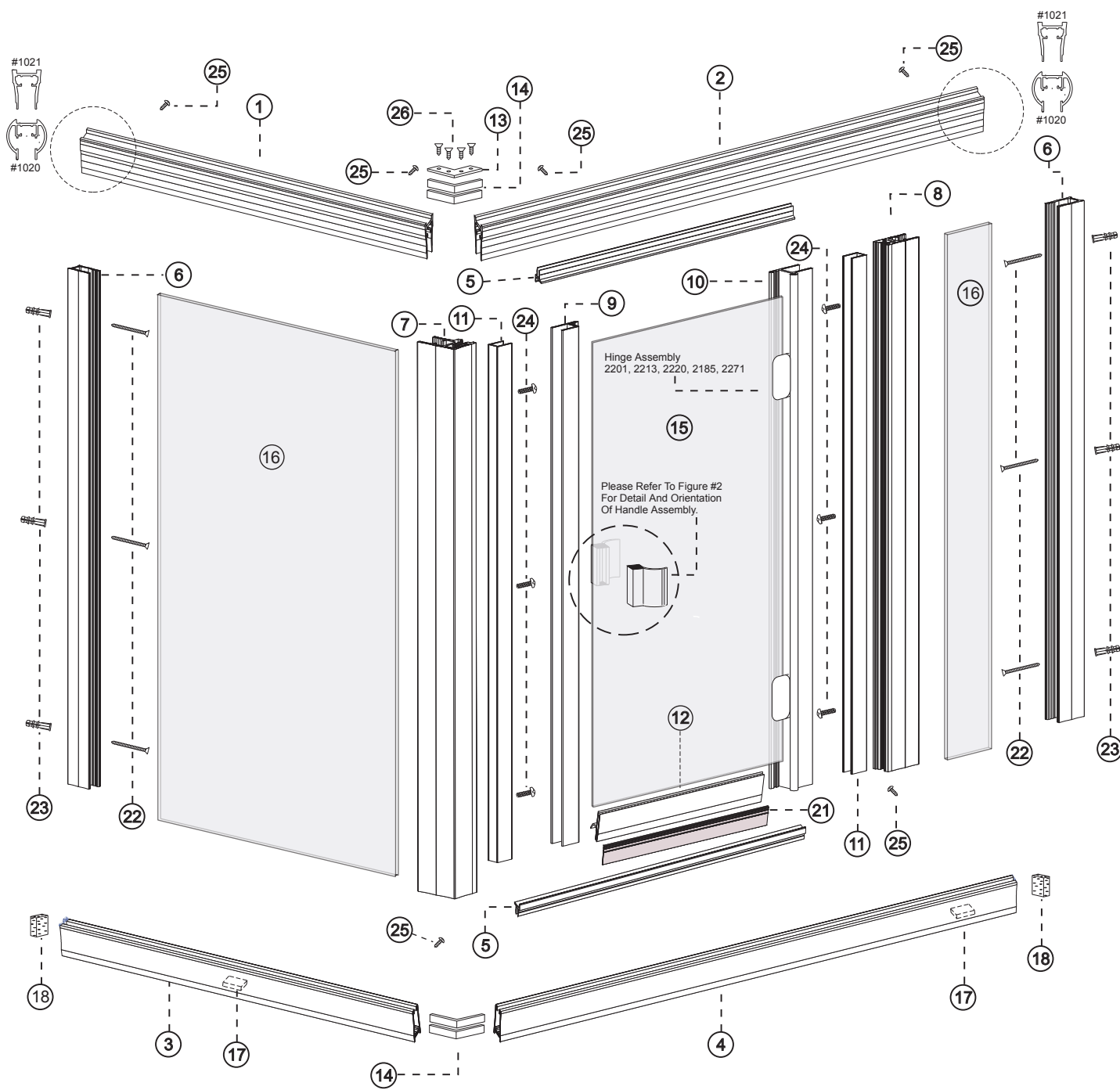


FIG # 2 - Shower Door Side View

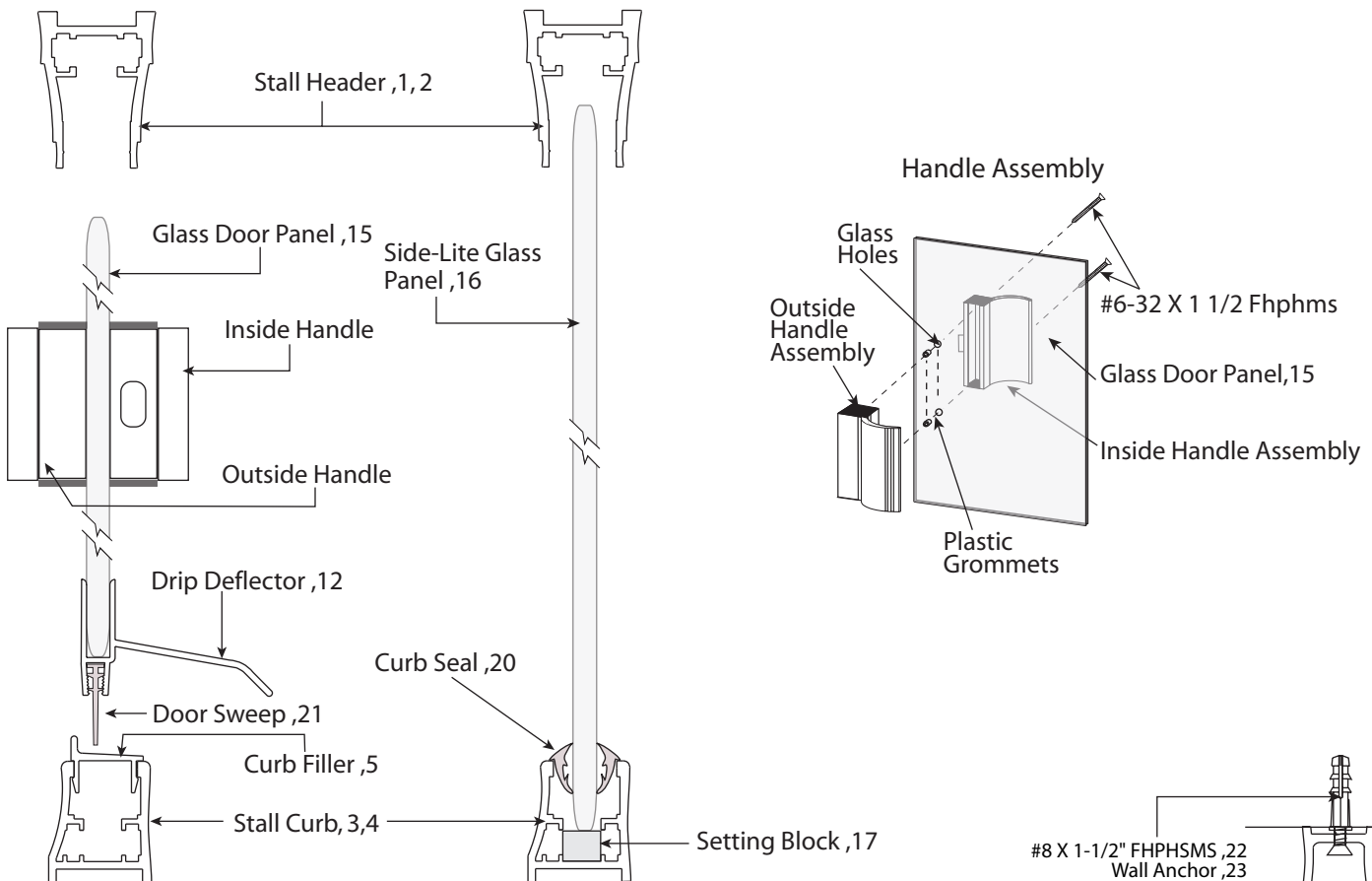
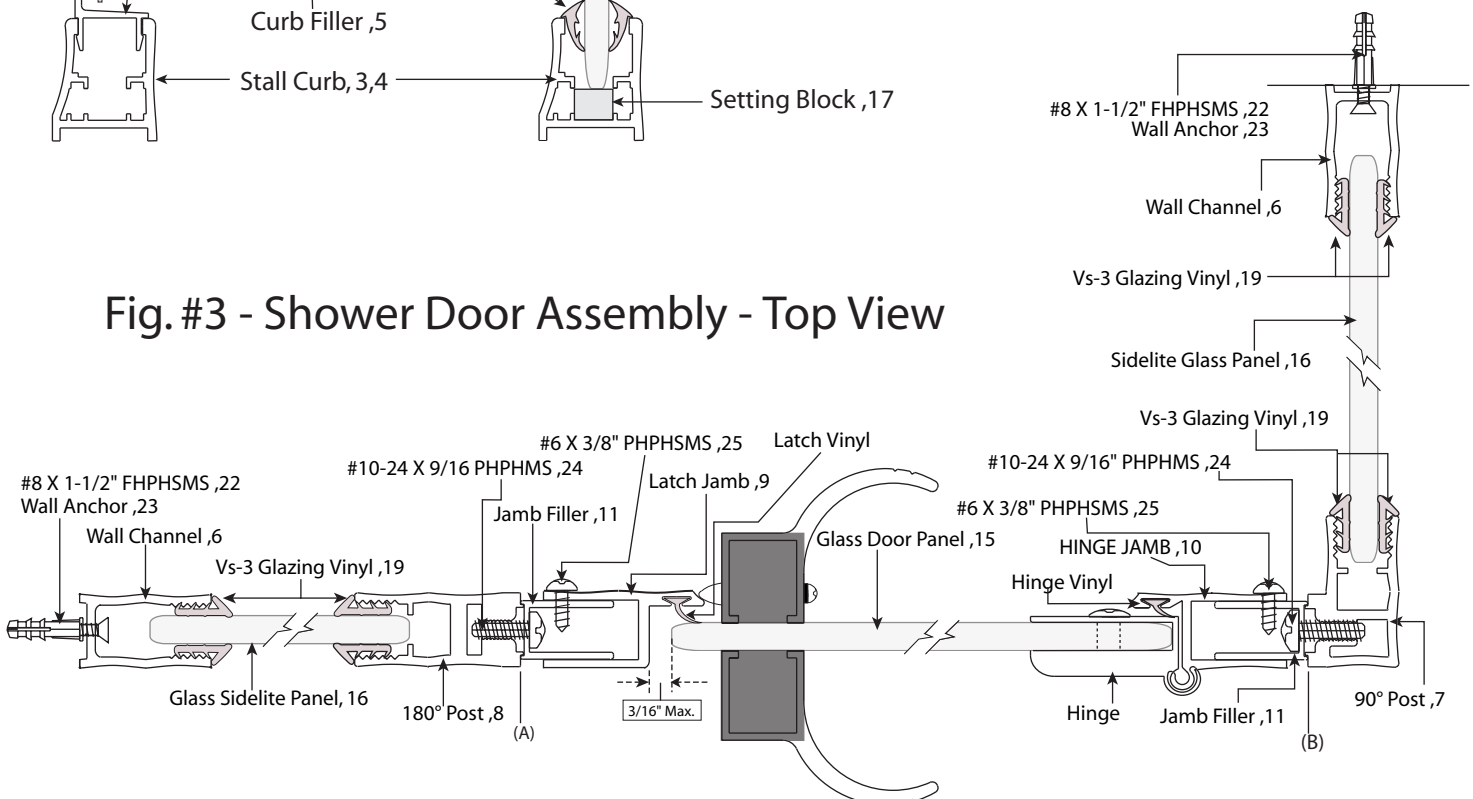


Fig. #3 - Shower Door Assembly - Top View



Installation Instructions For The Accent/Euro Collection
Swing Door With 180°, 90° Return Panel And Panel At Wall
Model: ASD-290 PAW & USD-290 PAW Rev. Date: 06-06-06
Drawing #: 6143



Fig. #4 - Stall Curb Filler

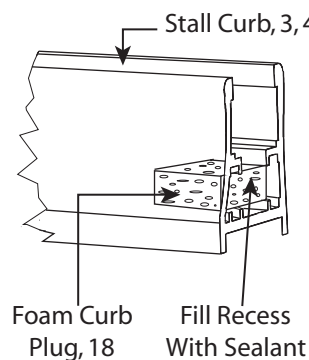


Fig. #5 - Notching

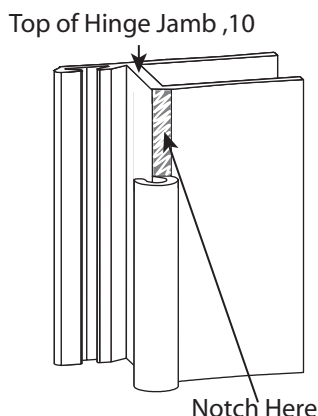


Fig. #6 Jamb Filler

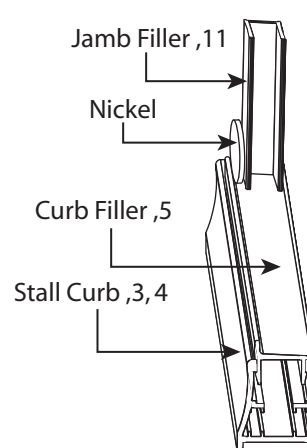
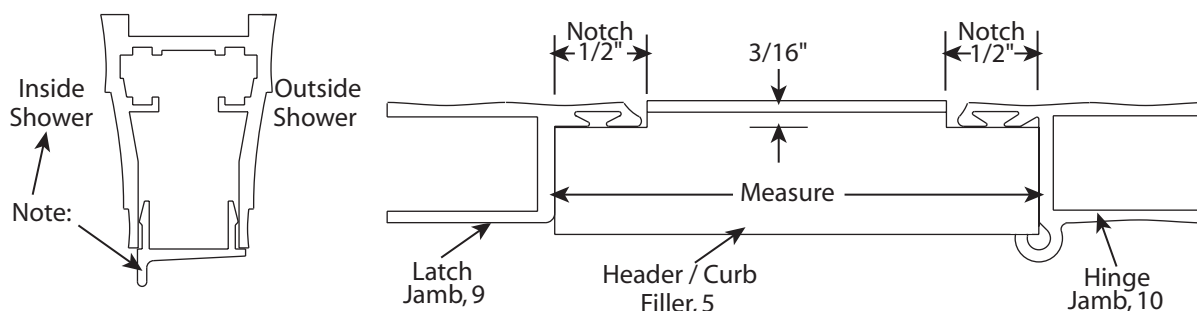


Fig. #7 Header Filler #1025 Measurements



6143 - ASD-290 & USD-290 Parts List

ITEM	PART NO.	DISCRIPTION	QTY.	ITEM	PART NO.	DISCRIPTION	QTY.
1	1021 / 1020	STALL HEADER LEFT SEC.	1	12	1009	DRIP DEFLECTOR	1
2	1021 / 1020	STALL HEADER RIGHT SEC.	1	13	2016	90° STALL HEADER PLATE	1
3	1022	STALL CURB LEFT SEC.	1	14	2015	90° STALL HEADER / CURB CLIPS	4
4	1022	STALL CURB RIGHT SEC.	1	FIG. 9	3004	HANDLE ASSEMBLY	1
5	1025	STALL HEADER / CURB FILLER	2	15	7002	GLASS DOOR PANEL	1
6	1026	WALL CHANNEL	2	16	7006	GLASS SIDE LITE PANEL	2
7	1027	90° POST	1	17	2203	SETTING BLOCK	2
8	1031	180° POST	1	18	2204	FOAM CURB PLUGS	2
9	1001	LATCH JAMB	1	19	4013	VS-3 GLAZING VINYL	8
	4015	HINGE / LATCH VINYL	1	20	4011	VS-1 GLAZING VINYL	1
10	1002	HINGE JAMB	1	21	4018	VW-2 DOOR SWEEP	1
	2220	HINGE	2	22	2101	#8 X 1 1/2" FHPSMS	6
	2201	HINGE PIN	2	23	2217	3/16" WALL ANCHORS	6
	2213	HINGE BUSHING	4	24	2111	#10-24 X 9/16" PHPSMS	6
	2185	#8-32 X 7/16 TRUSS HEAD	2	25	2102	#6 X 3/8" PHPSMS	12
	2271	3/16" PLASTIC GROMMET	2	26	2103	#6 X 3/8" FHPSMS	4
11	1003	JAMB FILLER	2	27	2107	#8 X 1/2" PHPH TEK	6

6143 - ASD & USD 290/290 Assembly Instructions

These installation instructions must be followed to ensure proper operation of the door and to reduce the risk of serious injury. Any deviation from these instructions can result in a serious safety hazard.

All exposed ends of aluminum that are rough, sharp or jagged due to the metal being cut, drilled or damaged should be de-burred, smoothed or rounded by the installer before installation. Failure to do so could result in serious injury to the user of the enclosure.

Any part of the swinging glass panels hitting any unprotected bathroom obstruction or metal or glass component of the shower door itself, may indicate improper installation and could lead to serious injury. Installers must correct the deficiencies before allowing the door to be used.



SPECIAL NOTE:

Drilling holes and anchoring horizontal sills and curbs to thresholds and tub decks is discouraged and is left to your discretion. Using masking tape or double-sided tapes to hold these components down during installation is recommended to minimize the potential for water leaking underneath flooring and onto ceilings below. These instructions do not recommend drilling holes on horizontal surfaces for this reason. Deviating from recommended installation instructions voids the Agalite Lifetime Warranty.

STEP 1 - STALL CURB:

On the shower base, mark the centerline of the unit and measure each centerline distance. Add 1/2" to each measurement and transfer to the appropriate curb sections, ITEM #3 and ITEM #4. NOTE: All dimensions on the curb and header are measured from the tip, (farthest point), of the 45° miter. Be sure to select the curb that is mitered in the direction for the side that you are measuring. Also, be sure that weep holes are oriented to the inside of the shower. NOTE: Your Curb sections may already be cut to size from the factory. At this time, cut only the curb sections to their installed lengths. Straight cut the butt ends opposite the miter to achieve the finished length. Insert one Curb Plug, ITEM #18, into the straight cut end of each Stall Curb and recess approximately 1/8", refer to FIGURE #4. Fill each recess with sealant. Take 2- 90° Curb Clips, ITEM #14, and assemble the right and left curb sections, refer to FIGURE #1. Reposition curb sections over centerline of shower and temporarily secure in place with masking tape. Insert one Setting Block, ITEM #17, into the curb where each Side Lite Panel will set, refer to FIGURE #1. With a screwdriver or other appropriate tool, press each of the Curb Plugs with the sealant into each wall sealing the curb ends. Seal the mitered corner so that any water that enters the curbs cannot leak out.

STEP 2 - WALL CHANNEL:

Center the Wall Channel, ITEM #6, on the 90° Side Lite Panel end of the Stall Curb and against the wall with open edge of channel facing away from the wall, refer to FIGURE #3. Plumb the Wall Channel, then using the Wall Channel's pre-drilled holes as a template; mark the three installation holes on the wall. Remove Wall Channel and drill holes into the wall with a 3/16" drill bit. If going into tile or other types of masonry materials, use a carbide tipped bit. Insert one Wall Anchor, ITEM #23, into each hole. Reposition the Wall Channel, align the holes, and secure with 3- #8 X 1-1/2" FHPHSMs, ITEM #22. Repeat the procedure with the second Wall Channel at the door side wall.

STEP 3 - SIDELITE PANEL:

Insert the 90° return Side Lite Glass Panel, ITEM #16, into the curb and slide into the Wall Channel. NOTE: If obscure, frosted or pebbled glass is used, ensure that the rough side of the panel faces to the outside. Set the 90° Post into the curb and over the edge of the glass panel. With a level, plumb the 90° Post and temporarily hold the post in place by glazing the top of the post with a few inches of the VS-3 Glazing Vinyl, ITEM #19. NOTE: Do not cut the glazing vinyl at this time. Insert the second Side Lite Glass Panel, ITEM #16, into the curb and slide into the second Wall Channel. Set the 180° Post into the curb and over the edge of the glass panel. With a level, plumb the 180° Post and temporarily hold the post in place by glazing the top of the post with a few inches of the VS-3 Glazing Vinyl, ITEM #19. NOTE: Do not cut the glazing vinyl at this time. Adjust door opening by first noting what size door you have been supplied with your unit. It will be marked on the front of the door carton with a designation of ASD - then a door size. (EXAMPLE: ASD-24). Take your door size and add 1/4" to it. This is the minimum dimension that you must have between the leading edge of the 180° Post and the 90° Post. Please note reference points A and B in FIGURE #3. Move the bottom of the 180° Post to this position. With a level, plumb the 180° Post and temporarily hold the post in place by glazing the top of the post with a few inches of the VS-3 Glazing Vinyl, ITEM #19. NOTE: Do not cut the glazing vinyl at this time. At this point, it is necessary to determine if the Side Lite Glass Panel is far enough into both vertical posts for proper glazing. 1/4" is the minimum penetration into each post. If this minimum penetration is not met, the 180° Post must be moved further onto the side lite panel to achieve the necessary coverage. The door assembly will cover any discrepancy.

Installation Instructions For The Accent/Euro Collection Swing Door With 180°, 90° Return Panel And Panel At Wall

Model: ASD-290 PAW & USD-290 PAW Rev. Date: 06-06-06

Drawing #: 6143



6143 - ASD & USD 290/290 Assembly Instructions Cont.

STEP 4 - CURB FILLER:

Measure between the 180° Post and the 90° Post then cut the Curb Filler, ITEM #5, to this dimension. With the vertical water dam of the Curb Filler to the outside of the shower, firmly snap into place between the 90° Post and the 180° Post. Refer to FIGURE #2 for proper orientation. The door assembly will be installed on top of the Curb Filler.

STEP 5 - STALL HEADER:

Using a level, plumb the 90° post in both directions. With the post plumb, measure from the outside corner of the post to each wall. Add 1/4" to this measurement if you are using the #1021 Stall Header, or add 7/16" if you are using the #1020 Stall Header. Mark this dimension on a header section ITEM # 1 or #2. NOTE: All dimensions on the header and curb are measured from the tip, (the farthest point) of the 45° miter. Be sure to select the header that is mitered in the right direction for the side that you are measuring. At this time, cut the header to length by cutting the butt end opposite the miter to achieve the finished length. Repeat this procedure for the second header section. Assemble the right and left header sections with 2- 90° Header Clips, ITEM #14, and the 90° Header Plate, ITEM #13. Do this by drilling through the holes in the plate into the headers with a #32 wire gauge drill bit. Secure with 4- #6 X 3/8" FHPHSMs, ITEM #26. Refer to FIGURE #1. Set headers in place over the vertical posts. Secure the header assembly to the vertical posts from the inside of the shower by drilling through the headers into each vertical post with a #32 wire gauge drill bit. Start with the Wall Channel at the Back wall, then the 90° Post. Next, plumb the 180° Post and repeat the procedure. Be very careful not to drill or screw into the glass panel. The panel can be moved side to side while drilling. Secure the headers with 4- #6 X 3/8" PHPHSM screws, ITEM #25. The bottom of the 90° Post and 180° are secured by drilling through the Stall Curb into the Post to Curb Key with the same #32 drill bit. Secure with 2- #6 X 3/8" PHPHSMs, ITEM #25. After attachment is complete, center the Side Lite panels between the posts and glaze the verticals with 8 pieces of VS-3 vinyl, (ITEM #19), and 4 pieces of VS-1 Curb Seal ITEM #20. NOTE: The vinyl seals are designed to be tight to provide maximum water protection, and minimize shrinkage due to temperature extremes. If it becomes difficult to push the vinyl in place, lubricate it with glass cleaner. This will allow easy installation then will evaporate leaving the vinyl tight and smooth. Do not use any type of grease, oils, or silicone sprays as these will harm the vinyl and will stay in place long after the installation is complete compromising safety as well as water protection. Finish this step by installing one Jamb Filler, ITEM #11, to the 90° Post and the second to the 180° Post as follows: Position the closed edge of the Jamb Filler to the 180° Post with the bottom of the filler resting on top of the Curb Filler. Refer to FIGURE #6 for technique to ensure proper spacing of jamb filler on the curb filler. Secure the filler to the post with 3- #10 -24 X 9/16" PHPHMS, (ITEM #24). Refer to FIGURE #3. CAUTION: Do not over tighten the screws.

STEP 6 - DRIP DEFLECTOR:

Take the Door Sweep, ITEM #21, and slide it into the bottom of the Drip Deflector as shown in FIGURE #2. A mild solution of soapy water will help if the sweep is difficult to pull through. The vinyl sweep has a memory when it is stretched, so be sure to work the sweep back and forth after it is drawn into the deflector. Trim the vinyl leaving 1/4" of the Door Sweep protruding from each end. Set the door assembly on its top on a cushion or pad, so that the bottom of the door is up. Set the Drip Deflector, ITEM #12, over the bottom edge of the door with the deflector portion to the inside of the shower. With a mallet or block of wood, gently tap the deflector over the edge of the door panel as far as it will go. In most cases, the glass thickness is enough to hold the Drip Deflector in place for the life of the door. In some circumstances the glass may be slightly thinner, depending on the type of glass being used, or the manufacturer of the glass its self. In these cases, the corners of the Deflector may be "pinched" to hold the Deflector in place, or simply inject a small amount of caulking into the channel where the glass will fit to maximize the holding power of the Deflector. NOTE: Only a small amount of caulking is necessary, too much caulking will be squeezed out during adjustment. It will be readjusted later. Make sure that the Drip Deflector does not protrude past the edge of the glass on the handle side.

STEP 7 - DOOR ASSEMBLY:

Measure the distance from the top of the Curb Filler to the bottom of the Header assembly. Transfer this dimension to the hinge jamb, measuring from the bottom and make your mark at the top of the jamb. Insert a hacksaw into the notch that is at the top of the hinge jamb and continue the notch down to the mark you made, then notch off. This procedure can be performed while still attached to the glass panel. Refer to FIGURE #5. NOTE: Door adjustment should be made by adjusting the Hinge Jamb first, then the Latch Jamb, equally off both Jamb Fillers. Slide the door assembly over the appropriate Jamb Filler and move it to the determined dimension off the 90° or 180° Post. Use a small level placed along the top horizontal edge of the glass to level the door.

Installation Instructions For The Accent/Euro Collection Swing Door With 180°, 90° Return Panel And Panel At Wall

Model: ASD-290 PAW & USD-290 PAW Rev. Date: 06-06-06

Drawing #: 6143



6143 - ASD & USD 290/290 Assembly Instructions Cont.

STEP 7 - DOOR ASSEMBLY Cont:

From the inside of the shower, screw through the top pilot hole in the Hinge Jamb into the Jamb Filler with one #8 X ½ PHPHTEK, ITEM #27. The door will hold in place with only the top screw installed. Next, re-level the door and screw through the middle and bottom holes with 2- #8 X ½ PHPHTEK, ITEM #27.

STEP 8 - LATCH JAMB:

Slide the Latch Jamb in place over the appropriate Jamb and up into the header. Do not secure the Latch Jamb at this time. Move the door to the closed position, pulling the Latch Jamb off enough so that it stops the door. With the door closed, the reveal between the vertical glass edge of the door and the Latch Jamb is a maximum of 3/16" for the handle catch to work properly. A 1/8" is ideal. Please refer to FIGURE#3 for adjustment detail. From the inside of the shower, screw through the factory holes in the Latch Jamb, into the Jamb Filler with 3- #8 X ½ PHPHTEK, ITEM #27.

STEP 9 - HANDLE ASSEMBLY:

Refer to FIGURE #2. Take the Inside Handle assembly with the bullet catch and adjustment screw and insert two #6-32 X 1-1/2" FHPHMS into the two screw holes in the Handle. Slide one Plastic Grommet over each threaded portion of the screws. WARNING: This shower door should not be installed without grommets. The grommets prevent the glass from touching the metal screw. If the metal touched the glass, the glass can break and create a serious safety hazard. With the door in the open position, from the inside of the door, insert this Handle assembly through the corresponding holes in the glass panel. Holding the assembly in place set the Outside Handle assembly in place over the holes and tighten the screws. Adjust the catch mechanism as necessary by turning the Phillips head screw on the inside Handle assembly. Finish the installation by adjusting the Drip Deflector as follows: Close the door and from either the inside or the outside, use a block of wood to tap the deflector down so that the Door sweep is approximately 1/16" above the Curb Filler's horizontal surface. The deflector does not need to tilted to function.

STEP 10 - HEADER FILLER:

Measure between the Hinge Jamb and Latch Jamb at the header, then cut the Header Filler, ITEM #5, to this dimension. Notch ends both ends to fit. Refer to FIGURE #7.

STEP 11 - CAULKING:

First, seal each end of the Drip Deflector with caulk, then run a bead of caulking the full length on the inside of the shower where each Jamb Filler meets the wall and across the bottom where it meets the shower base. Finish by sealing each end of the Curb Filler, ITEM #5, located under the door.

6143 - ASD & USD 290/290 Step-Up Instructions

STEP 1 – MEASURE:

Measure between wall and buttress, subtract 1/16" and cut Stall Curb (#3,4) to length. Set in place on threshold. Cut Curb Filler (#5) to same length as Stall Curb and snap into place. Hold Stall Curb in place with strips of masking tape.

STEP 2 - JAMB FILLER:

Attach Jamb Filler (#9) to 90° Post, (#7), with 3- #10-24 x 9/16" PHPHMS, (#17). NOTE: These jambs will not be flush at the top. Set attached jambs in place and plumb with a level. Set Panel Sill in place lined up off of attached post. Hold in place with strips of masking tape. Remove attached post. Seal end of panel sill at wall with caulking.

STEP 3 – WALL CHANNEL:

Set Wall Channel in place on top of panel sill, plumb and secure to wall. Insert Setting Blocks and install side-lite panel.

STEP 4 - BUTTRESS:

Reinstall attached post and secure to buttress face.

STEP 5-11:

Follow Steps 5 - 11 in the main instruction sheet.

