

Installation Instructions for the Estate Collection

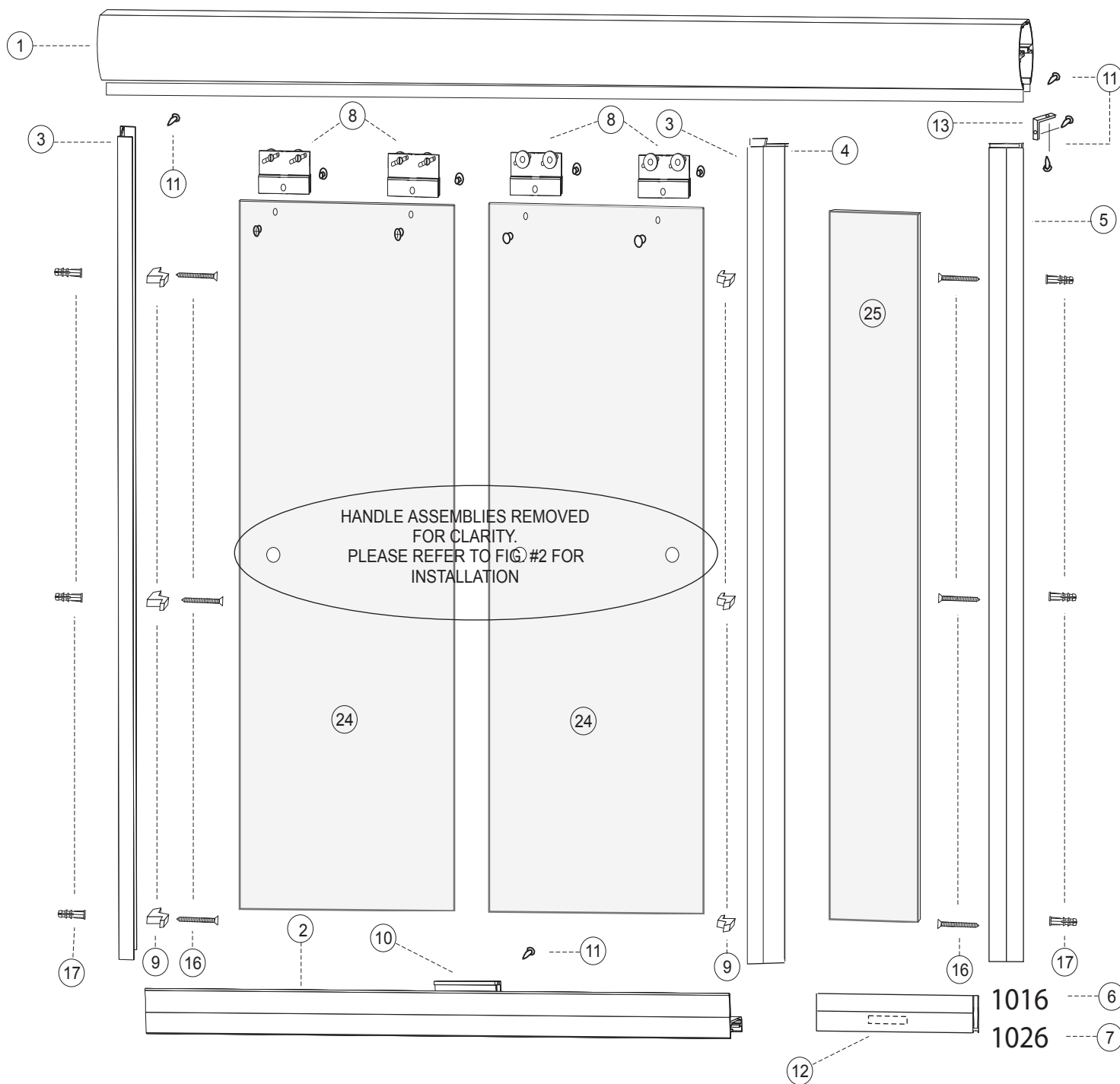
Model: ESE180 / ETE180 (two panel sliding enclosure w/in-line panel.)

Drawing #: 6152

Rev. Date: 11-03-05



FIG. #1 - Shower Door Assembly



Installation Instructions for the Estate Collection

Model: ESE180 / ETE180 (two panel sliding enclosure w/in-line panel.)

Drawing #: 6152

Rev. Date: 11-03-05



FIG.# 2 - Top View

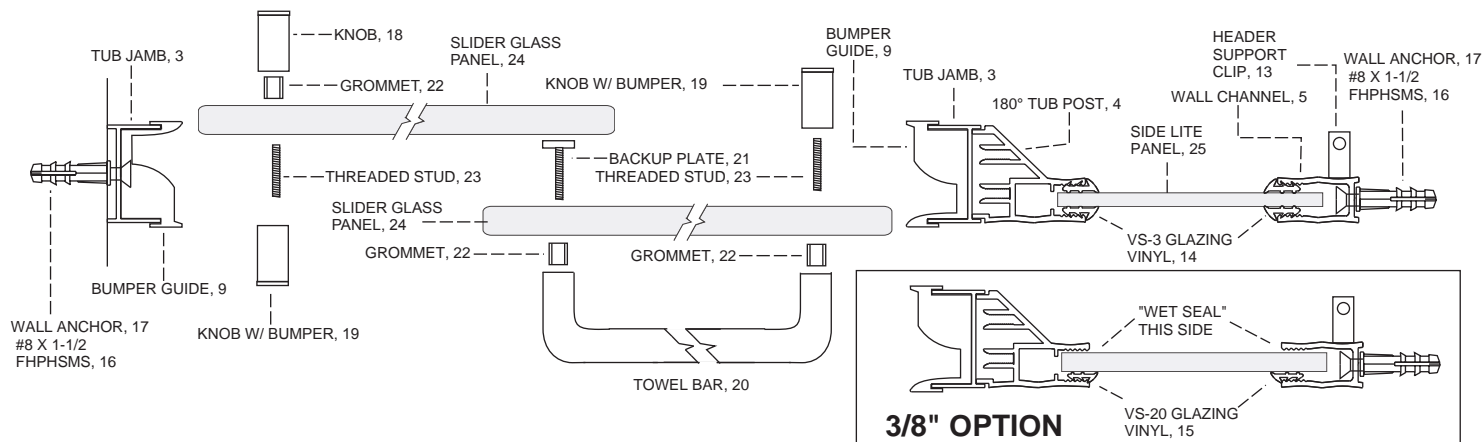


FIG. #3 - Tub Jamb Assembly

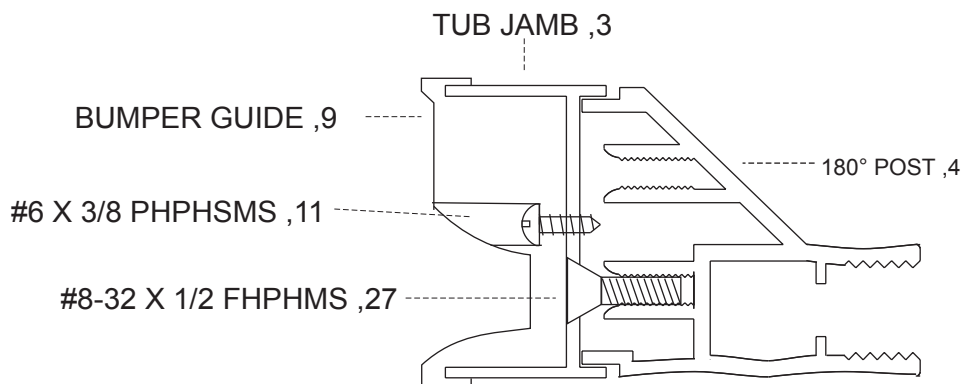
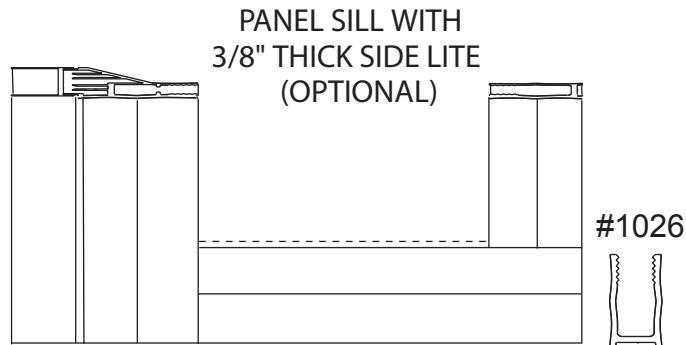
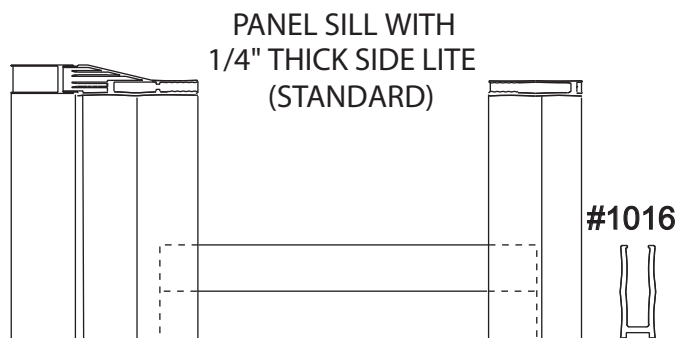


FIG. #4 - Panel Sill Assembly



Installation Instructions for the Estate Collection

Model: ESE180 / ETE180 (two panel sliding enclosure w/in-line panel.)

Drawing #: 6152

Rev. Date: 11-03-05



FIG. #5 - Wall Channel / Header Assembly

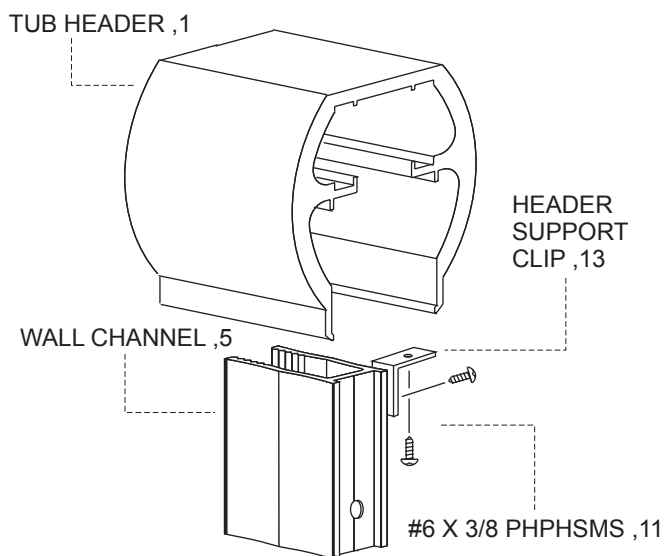
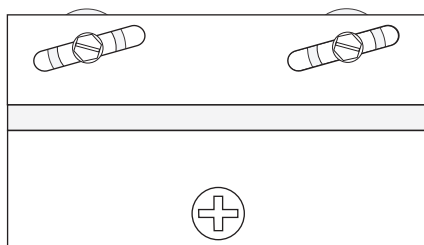


FIG. #6 - Hanger Bracket Assembly

SPECIAL NOTE:

If for some reason the rollers need to be reversed to the opposite side of the glass, the entire hanger bracket assembly must be removed and reinstalled. The rollers must remain on the same side of the bracket that they are assembled.

Screw heads are all on the same side.



Nylon rollers are all on the same side.

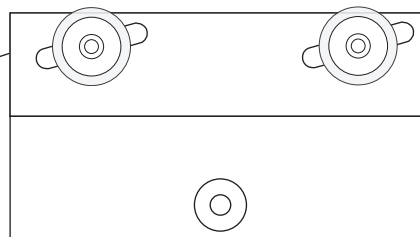
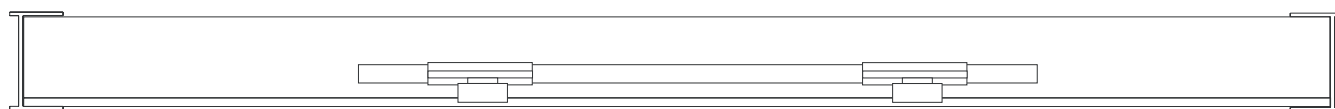
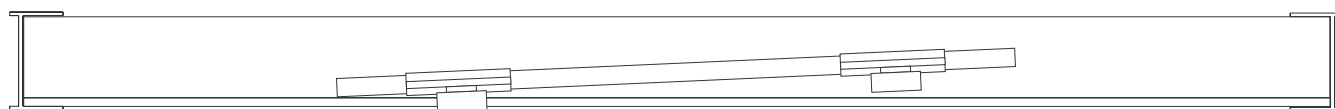


FIG. #7 - Top View - Looking Down at the sill with Panel Installed In Header.



CORRECT



INCORRECT

Installation Instructions for the Estate Collection

Model: ESE180 / ETE180 (two panel sliding enclosure w/in-line panel.)

Drawing #: 6152

Rev. Date: 11-03-05



6152 ESE180 / ETE180 - Parts List

ITEM #	PART #	DESCRIPTION	QTY	ITEM #	PART #	DESCRIPTION	QTY
1	1052	Tub Header	1	15	4033	VS-20 Glazing Vinyl (3/8" side lite)	3
2	1062	Stay Clean Sill	1	16	2101	#8 X 1-1/2 FHPHMS	6
3	1051	Tub Jamb	2	17	2217	3/16" Wall Anchors	6
4	1023	180° Post	1	18	2384	Knob	1
5	1026	Wall Channel	1	19	2385	Knob W/ Bumper	2
6	1016	Panel Sill (1/4" side lite)	1	20	XXXX	Towel Bar	1
7	1026	Panel Sill (3/8" side lie)	1	21	XXXX	Back Up Plate	1
8	2275	Hanger Bracket	4	22	XXXX	Grommet	3
9	2223	Bumper Guide	6	23	XXXX	Threaded Stud	2
10	2207	Center Guide	1	24	XXXX	Slider Glass Panels	2
11	2102	#6 X 3/8 PHPHMS	6	25	XXXX	Side lite Glass Panel	1
12	2203	Setting Block	1	26	4032	TF-3 T-Fin	1
13	2019	Header Support Clip	1	27	2103	#8-32 X 1/2 FHPHMS	3
14	4013	VS-3 Glazing Vinyl (1/4" side lite)	4	28	2215	Adjustment Wrench	1



These installation instructions must be followed to ensure proper operation of the door and to reduce the risk of serious injury. Any deviation from these instructions can result in a serious safety hazard.



All exposed ends of aluminum that are rough, sharp or jagged due to the metal being cut, drilled or damaged should be deburred, smoothed or rounded by the installer before installation. Failure to do so could result in serious injury to the user of the enclosure.

Any part of the sliding glass panels hitting any unprotected bathroom obstruction or metal or glass component of the shower door itself, may indicate improper installation and could lead to serious injury. Installers must correct the deficiencies before allowing the door to be used.

SPECIAL NOTE:

Drilling holes and anchoring horizontal sills and curbs to thresholds and tub decks is discouraged. Using masking tape or double-sided tapes to hold these components down during installation is recommended to minimize the potential for water leaking underneath flooring. These instructions do not recommend drilling holes on horizontal surfaces.

STEP 1 -- CENTERLINE:

Locate as accurately as possible the centerline, (C/L), of the shower and mark it with a water soluble marker. In most installations the Stay Clean Sill, (ITEM #2), is centered over and parallel to the C/L. Center the Tub Jamb with only 3- holes in it, (ITEM #3), over the centerline and against the shower head sidewall. Using a level, plumb the jamb, then mark the bottom hole location only, using the predrilled factory hole as a template. Drill the single bottom hole using a 3/16" drill bit, (use carbide tipped if going into tile, marble or any type of masonry material). Insert one Wall Anchor, (ITEM #17), into the hole, then secure the Tub Jamb with 1- #8 X 1-1/2" FHPHMS, (ITEM #16) installing the screw through a Bumper Guide, (ITEM #9).

NOTE: Tighten screw so that it is snug, but so that the Tub Jamb may be moved side to side at the top.

This will allow for final adjustment later. Use two or three strips of masking tape across the Tub Jamb to the wall to hold the jamb from moving during installation.

Installation Instructions for the Estate Collection

Model: ESE180 / ETE180 (two panel sliding enclosure w/in-line panel.)

Drawing #: 6152

Rev. Date: 11-03-05



STEP 2 -- STAY CLEAN SILL:

Measure the combined widths of the slider glass panels and subtract $7/16"$. This is the installed length of the Stay Clean Sill. (Example: Two 30" wide panels equals 60" combined width, subtract $7/16" = 59-9/16"$). At this time, calculate the measurement, and cut Stay Clean Sill, (ITEM #2), to this length. Next, find the exact middle of the Stay Clean Sill. Using the factory hole in the Center Guide, (ITEM #10), as a template, mark the hole onto the Stay Clean Sill and drill with a #32 wire gauge drill bit. NOTE: Do not attach Center Guide at this time. Set the sill assembly on the shower or tub base by inserting the Stay Clean Sill into the legs of the Tub Jamb and align over centerline. Temporarily hold sill in place with masking tape. Take the second Tub Jamb that has 6- holes in it, (ITEM #3), and attach it to the 180° Tub Post, (ITEM #4), by orienting the 3- large holes to the outside of the shower, and attaching with 3- #8-32 X $1/2$ FHPHSMS, (ITEM #27). Attach 3- Bumper Guides, (ITEM #9), to the Tub Jamb by first orienting the guides to receive the outside sliding panel and securing with #6 X $3/8$ PHPHSMS, (ITEM #11) into the 3 remaining small holes. See (Fig. #2 & 3).

STEP 3 -- PANEL SILL ($1/4"$ Side Lite):

Measure the width of the Side Lite Panel, (ITEM #25) and add $3/4"$ to this measurement. Cut the Panel Sill, (ITEM #6) to this dimension. Temporarily set the 180° Post assembly in place over the end of the Stay Clean Sill. Please note that the Panel Sill as well as the Wall Channel that has yet to be installed, will set outside of the centerline. Insert the Panel Sill into the 180° Post and align all parts to the wall to determine location of the Wall Channel. Attach the Header Support Clip, (ITEM #13), flush to the end of the Wall Channel, (ITEM #5), as shown in (FIG. #2 & 5). Secure clip with one #6 X $3/8$ PHPHSMS, (ITEM #11). After this is done, insert Wall Channel, (ITEM #5) over open end of the Panel Sill and against the wall. Plumb Wall Channel and secure to wall by drilling three $3/16"$ holes and attach with three #8 X $1 \frac{1}{2}$ FHPHSMS and anchors (ITEM #16 & #17).

STEP 4 - PANEL SILL ($3/8"$ Side Lite):

Temporarily place 180° Tub Post, (ITEM #4), with Tub Jamb attached, in position at the end of the Stay Clean Sill. Please note that the Panel Sill fits between the 180° Post and the wall, NOT between the 180° Post and the Wall Channel. At this time, measure between the post and the wall and cut the Panel Sill, (ITEM #7), to size. Realign the Stay Clean Sill, the 180° Tub Post, and the Panel Sill to determine the location of the Wall Channel. Please note that the Panel Sill as well as the Wall Channel that has yet to be installed, will set outside of the centerline. Remove the 180° Post without disturbing the Panel Sill. Temporarily hold the panel sill in place with masking tape. Set the Wall Channel, (ITEM #5), on top of the Panel Sill, and against the wall, then plumb with a level. Mark the channels' predrilled hole locations on the wall and drill with a $3/16"$ drill bit. Insert three Wall Anchors, (ITEM #17), then realign the channel with the holes and secure with three #8 X $1-1/2"$ FHPHSMS, (ITEM #16).

STEP 5 -- WALL CHANNEL:

After the Wall Channel is secure, apply sealant to the inside of the Panel Sill to plug each end then insert a Setting Block, (ITEM #12), into the Panel Sill to protect the bottom of the glass panel. Please note that the Setting Block is oversized so that it may be recut into as many blocks as necessary. Remove masking tape from the Panel Sill and set the 180° Glass Panel into the Panel Sill and into the Wall Channel. Temporarily hold the post and glass panel in a plumb position by inserting 1 or 2 inches of Glazing Vinyl into the top of both posts. NOTE: Do not cut vinyl at this time.

Installation Instructions for the Estate Collection

Model: ESE180 / ETE180 (two panel sliding enclosure w/in-line panel.)

Drawing #: 6152

Rev. Date: 11-03-05



STEP 6 -- TUB HEADER:

Measure wall to wall at the top of the vertical posts, then subtract 1/16" from this dimension and cut the Tub Header, (ITEM #1), to it's finished length. Set the header in place over the top of the Tub Jamb and Wall Channel with the Header Support Clip. Be sure that the roller channels of the header are resting firmly on the verticals. Secure Header at each wall by drilling through the Header into the verticals with a #32 wire gauge drill bit. Secure with 1 - #6 X 3/8 PHPHMS, (ITEM #11). Using a level, plumb the 180° post combination and secure to the header from the inside of the shower by drilling through the header into the post with a #32 wire gauge drill bit. Secure with 1- #6 X 3/8" PHPHMS, (ITEM #11). Center the 180° Glass Panel between the posts and finish glazing with 4- VS-3 Glazing Vinyl, (ITEM #14), for the verticals only and "Wet Seal" the Panel Sill at the bottom with silicone caulking. FOR 3/8" THICK SIDELITE: Glaze the outside verticals and bottom with Clear VS-20, (ITEM #15), then "Wet Seal" the inside with silicone caulking. See (FIG. #2).

STEP 7 -- SLIDING PANELS:

Make sure that the Tub Jamb with only one screw in it is snug, but still is able to move side to side. Hang the outside panel only in place in the Header. Make sure that the rollers are firmly seated in the Header roller channel. Slide it all the way towards the fully secured Tub Jamb.

STEP 8 -- PANEL ALIGNMENT:

Standing outside of the shower, hold the Header at the top where it meets the unsecured Tub Jamb.

BE VERY CAREFUL TO KEEP CONTROL OF THE HEADER SO THAT THE SLIDING GLASS PANELS CAN NOT FALL.

Slowly, move the sliding panel to the middle of the opening. Adjust the header side to side, seeking a point where the outside face of the panel laying against the vertical leg of the Stay Clean Sill, exactly parallels it. The full width of the glass panel must contact the T-Fin of the Stay Clean Sill, not hitting on one edge or the other only. Now the panel is tracking on the same line as the Stay Clean Sill. See (FIG. #7). Mark the position of the Tub Jamb onto the wall. Slide the panel back to the secured Tub Jamb and remove the sliding panel and set it a safe place. Move the Tub Jamb back to the marked location on the wall and mark the final two hole locations. Remove the Tub Jamb and drill the holes with a 3/16" drill bit. Insert two Wall Anchors, (Item #17). Realign the Tub Jamb and secure with three #8 X 1-1/2 FHPHMS, (Item #16), attaching a Bumper Guide, (Item #9), with each screw. See (Fig. #1). Make sure the Bumper Guides are oriented to accept the proper panel. Install both of the sliding glass panels as you did earlier in this step, then install the Center Guide, (Item #10).

STEP 9 -- TOWEL BAR AND KNOBS:

The inside sliding panel, when closed, must be at the shower head wall so that it can deflect water away from the overlap of the panels at the center of the enclosure. Thus, the outside panel must be away from the shower head wall when closed. For the pull assemblies, start by sliding the glass panels to their proper closed position. You will notice that the center hole is inaccessible because of the overlap in the panels. Make it accessible by sliding each panel to it's opposite wall. Now the hole is at the outside edge. Begin installing the pull assemblies with the panels in this position. Start by installing the Back up Plate through the exposed hole on the outside panel, place one Plastic Spacer in the hole followed from the inside with a Back Up Plate into the corresponding hole in the Towel Bar on the outside of the panel for proper orientation and assembly slide the panels back to their proper positions and simply follow the detailed drawing in (Fig. #2).

STEP 10 -- CAULKING:

Apply a bead of caulk along the entire inside of the enclosure where it meets the walls and base. Caulk the joint where the each Tub Jamb meets the Stay Clean Sill. Apply caulk at the joints where the Panel Sill meets both vertical